

STOP VALVE (GLOBE VALVE)

- PLASTIC BODY WITH HIGH RESISTANCE TO CORROSION, CHEMICALS AND WEAR.
- COMPACT SIZE AND AFFORDABLE TYPE
- ALSO AVAILABLE FOR FLOW CONTROL OR NEEDLE VALVE (SPECIAL ORDER)

BASIC SPECIFICATIONS

VALVE TYPE ————— STOP VALVE (GLOBE VALVE)
 SIZE ————— 15 mm—100 mm (1/2 inch—4 inch)
 BODY MATERIAL ————— **U-PVC** **PP**
 SEAL MATERIAL / PACKING — **EPDM** **PTFE** etc.
 CONNECTION / FLANGED — JIS5K, JIS10K, DIN, ANSI
 SOCKET — JIS, DIN, ANSI
 THREADED— Rc, Rp, NPT
HIGH PURITY SERIES — **LUBRICANT FREE**

	FLUID TEMPERATURE	MAXIMUM WORKING PRESSURE (NORMAL TEMPERATURE) MPa(kgf/cm ²)	CONNECTION METHOD		
			FLANGED	SOCKET	THREADED
U-PVC	0°C ~ 50°C	1.0 {10.2}	○	○	○
PP	-20°C ~ 80°C	0.75 {7.7}	○	—	○

NOTES The maximum working pressure is the value including the water hammer pressure. Be careful that the maximum working pressure is not exceeded during use.
 * Concerning the allowable pressure for each temperature and material, see the technical documents at the end of this catalog.



PARTS LIST **MANUAL**

PRODUCT MODEL CODE LIST	ACTUATION	TYPE	OPERATING SYSTEM	BODY MATERIAL	SEAL MATERIAL	CONNECTION	STANDARD	SIZE	HIGH PURITY SERIES
MANUAL	V	ST	MH	*	*	*	*	***	1
	⋮	⋮	⋮	⋮	⋮	⋮	⋮	⋮	⋮
	V MANUAL VALVE	ST STOP VALVE (GLOBE VALVE)	MH ROUND HANDLE	U U-PVC P PP	E EPDM V FKM T PTFE	S SOCKET N THREADED F FLANGED	J JIS 1 JIS10K 5 JIS5K	015 15mm ? 100 100mm	1 LUBRICANT FREE

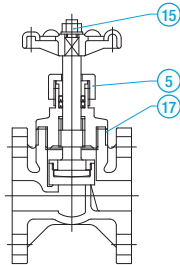
STOP VALVE (GLOBE VALVE)

TYPE—VSTMH

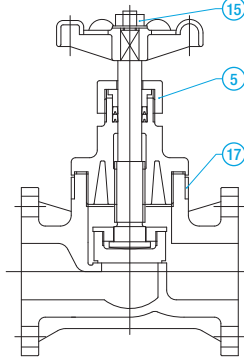
CONNECTION / FLANGED—JIS, DIN, ANSI

FLANGED

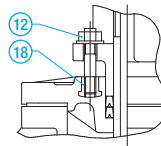
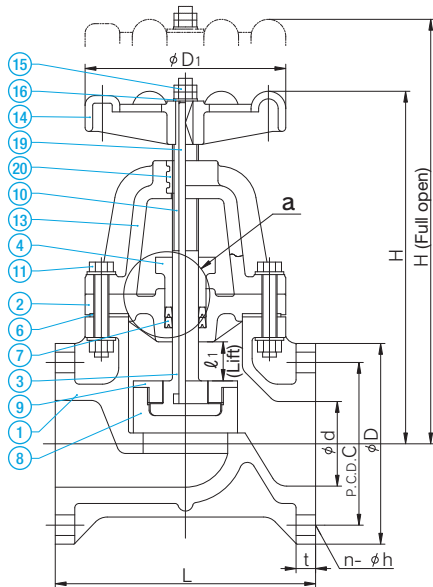
15 mm — 32 mm
(1½ inch — 1¼ inch)



40 mm — 50 mm
(1½ inch — 2 inch)



65 mm — 100 mm (2½ inch — 4 inch)



DETAILS OF SECTION "a"

PART NO. / NAME	QTY	MATERIAL
1 BODY	1	U-PVC, PP
2 BONNET	1	U-PVC, PP
3 STEM (1)	1	U-PVC, PP
4 PACKING GLAND	1	U-PVC, PP
5 GLAND NUT(2)	1	U-PVC
6 PACKING (3)	1	EPDM, PTFE, etc.
7 GLAND PACKING	1 SET	PDM, PTFE, etc.
8 DISC	1	PP
9 STEM HOLDER	1	PP
10 STEM WITH TRAPEZOIDAL SCREW	1	C3604Used for 65 to 100 mm.
11 HEX BOLT/NUT	8	SUS304Used for 65 to 100 mm.
12 STUD BOLT/NUT	2	SUS304Used for 65 to 100 mm.
13 STEM SUPPORT	1	PPUsed for 65 to 100 mm.
14 HANDLE WHEEL	1	PP
15 NUT (A)	1	U-PVCUsed for 15 to 50 mm.
	2	SUS304Used for 65 to 100 mm.
16 WASHER	1	U-PVCUsed for 15 to 50 mm.
	1	SUS304Used for 65 to 100 mm.
17 REINFORCEMENT RING	1	SUS304Used for 15 to 50 mm for body material of PP.
18 STUD NUT	2	C3604Used for 65 to 100 mm.
19 EMBEDDED STEM FITTING	1	SS400Used for 65 to 100 mm.
20 EMBEDDED SUPPORT FITTING	1	BC6Used for 65 to 100 mm.

NOTES (1) For 65 to 100 mm, PP only.
(2) Used for 15 to 50 mm.
(3) PTFE+EPDM when the packing is made of PTFE.

■ JIS, DIN (Unit: mm)

								JIS5K				JIS10K				DIN PN10			
mm	d	D1	ℓ1	H	H (FULL OPEN)	L	t	D	C	n	h	D	C	n	h	D	C	n	h
15	18	66	8	124	132	85	12	80	60	4	12	95	70	4	15	95	65	4	14
20	24	66	8	132	140	95	14	85	65	4	12	100	75	4	15	105	75	4	14
25	28	91	11	150	161	110	14	95	75	4	12	125	90	4	19	115	85	4	14
32	37	91	13	154	167	135	16	115	90	4	15	135	100	4	19	140	100	4	18
40	41	135	17	210	230	190	16	120	95	4	15	140	105	4	19	150	110	4	18
50	52	135	22	228	252	200	16	130	105	4	15	155	120	4	19	165	125	4	18
65	67	185	35	310	345	220	18	155	130	4	15	175	140	4	19	185	145	4	18
80	78	185	35	324	359	240	18	180	145	4	19	185	150	8	19	200	160	8	18
100	100	185	40	379	419	290	18	200	165	8	19	210	175	8	19	220	180	8	18

■ ANSI (Unit: inch)

											ANSI CLASS150			
inch	mm	d	D1	ℓ1	H	H (full open)	L	t			D	C	n	h
1/2	15	0.71	2.60	0.31	4.88	5.20	3.35	0.47			3.50	2.38	4	0.62
3/4	20	0.94	2.60	0.31	5.20	5.51	3.74	0.55			3.88	2.75	4	0.62
1	25	1.10	3.58	0.43	5.91	6.34	4.33	0.55			4.25	3.12	4	0.62
1 1/4	32	1.46	3.58	0.51	6.06	6.57	5.31	0.63			4.62	3.50	4	0.62
1 1/2	40	1.61	5.31	0.67	8.27	9.06	7.48	0.63			5.00	3.88	4	0.62
2	50	2.05	5.31	0.87	8.98	9.92	7.87	0.63			6.00	4.75	4	0.75
2 1/2	65	2.64	7.28	1.38	12.20	13.58	8.66	0.71			7.00	5.50	4	0.75
3	80	3.07	7.28	1.38	12.76	14.13	9.45	0.71			7.50	6.00	4	0.75
4	100	3.94	7.28	1.57	14.92	16.50	11.42	0.71			9.00	7.50	8	0.75

MANUAL

THREADED

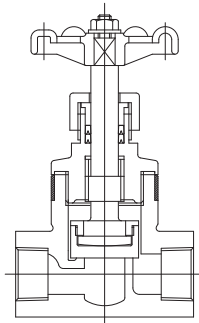
SOCKET

STOP VALVE (GLOBE VALVE)

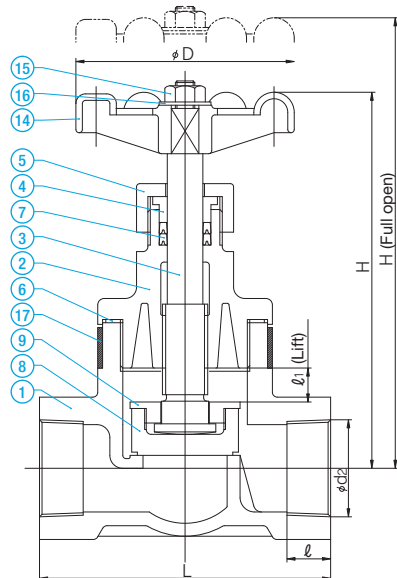
TYPE—VSTMH

CONNECTION / SOCKET—JIS, DIN, ANSI THREADED—Rc, Rp, NPT

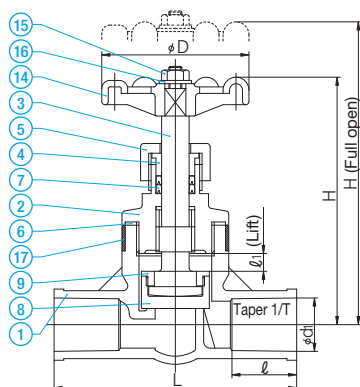
THREADED 15 mm – 32 mm
(1½ inch – 1¼ inch)



40 mm – 50 mm
(1½ inch – 2 inch)



SOCKET 15 mm – 25 mm
(½ inch – 1 inch)



PART NO. / NAME	QTY	MATERIAL
① BODY	1	U-PVC, PP
② BONNET	1	U-PVC, PP
③ STEM	1	U-PVC, PP
④ PACKING GLAND	1	U-PVC, PP
⑤ UNION NUT	1	U-PVC
⑥ PACKING	1	EPDM, PTFE, etc.
⑦ GLAND PACKING ⁽¹⁾	1 SET	EPDM, PTFE, etc.
⑧ DISC	1	PP
⑨ STEM HOLDER	1	PP
⑭ HANDLE WHEEL	1	PP
⑮ NUT (A)	1	U-PVC
⑯ WASHER	1	U-PVC
⑰ REINFORCEMENT RING	1	SUS304... Used when the body material is PP.

NOTES (1) PTFE+EPDM when the gland packing is made of PTFE.

■ JIS, DIN (Unit: mm)

mm	D	ℓ ₁	H	H (FULL OPEN)	JIS						DIN				
					SOCKET				THREADED		SOCKET				
					U-PVC				d ₂	ℓ	L	U-PVC			
d ₁	ℓ	1/T	L	d ₂	ℓ	L	d ₁	ℓ	1/T	L					
15	66	8	124	132	22.40	30	1/34	110	Rc 1/2	15	85	20	16	6	82
20	66	8	132	140	26.45	35	1/34	130	Rc 3/4	18	95	25	19	8	98
25	91	11	150	161	32.55	40	1/34	150	Rc 1	20	110	32	22	11	114
32	91	13	154	167	-	-	-	-	Rc 1 1/4	25	135	-	-	-	-
40	135	17	218	235	-	-	-	-	Rc 1 1/2	25	140	-	-	-	-
50	135	22	237	259	-	-	-	-	Rc 2	27	180	-	-	-	-

■ ANSI (Unit: inch)

inch	mm	D	ℓ ₁	H	H (FULL OPEN)	ANSI						
						SOCKET			THREADED			
						d ₂	d ₁	ℓ	L	d ₂	ℓ	L
1/2	15	2.60	0.31	4.88	5.20	0.848	0.59	1.18	4.33	1/2-14NPT	0.59	3.35
3/4	20	2.60	0.31	5.20	5.51	1.058	0.71	1.38	5.12	3/4-14NPT	0.71	3.74
1	25	3.58	0.43	5.91	6.34	1.325	0.98	1.58	5.91	1-11 1/2NPT	0.79	4.33
1 1/4	32	3.58	0.51	6.06	6.57	-	-	-	-	1 1/4-11 1/2NPT	0.98	5.32
1 1/2	40	5.31	0.67	8.58	9.25	-	-	-	-	1 1/2-11 1/2NPT	0.98	5.51
2	50	5.31	0.87	9.33	10.20	-	-	-	-	2-11 1/2NPT	1.06	7.09

CONSTANT FLOW VALVE

- USE OF THE POWER OF THE FLUID ELIMINATES THE USE OF ANY POWER SOURCE, RESULTING IN POWER SAVING.
- HIGH ACCURACY (WITHIN +/-6% OF FULL SCALE) AND LARGE RANGEABILITY (RATIO OF MAX. AND MIN. FLOW SETTING VALUES)
- THE SET FLOW CAN BE CHANGED BY HANDLE OPERATION. CAN ALSO BE USED AS AN INHIBITOR VALVE (COMPLETE CLOSURE).
- EQUIPPED WITH OPENING DEGREE INDICATOR THAT ALLOWS FOR CHECKING OF SET FLOW RATE (m3/hr).
- THE WETTED PART USES CORROSION-RESISTANT AND LIGHTWEIGHT PLASTIC AND ELASTOMER.
- USES SPRING (SUS304) FULLY COATED WITH FLUORORESIN HAVING ADEQUATE DURABILITY AND CHEMICAL RESISTANCE.

BASIC SPECIFICATIONS

VALVE TYPE ————— CONSTANT FLOW VALVE

SIZE ————— 15 mm, 20 mm, 25 mm, 50 mm, 80 mm, 100 mm
(1/2 inch, 3/4 inch, 1 inch, 2 inch, 3 inch, 4 inch)

BODY MATERIAL ————— U-PVC

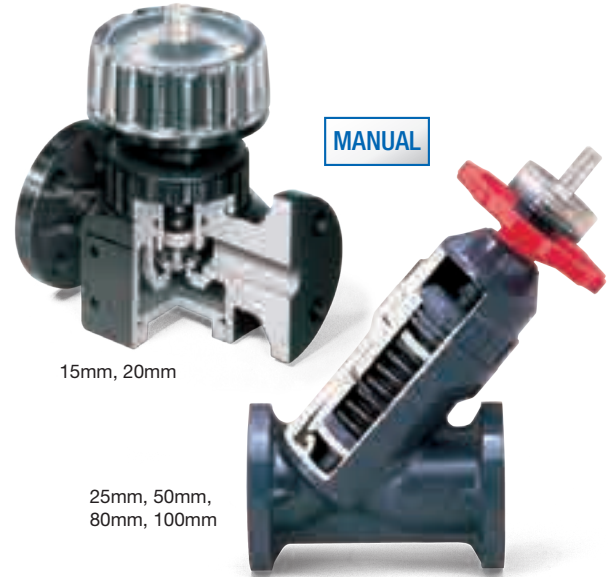
SEAL MATERIAL ————— EPDM etc.

CONNECTION / FLANGED — JIS5K, JIS10K, DIN, ANSI

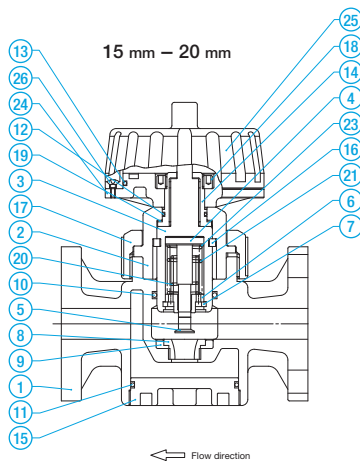
HIGH PURITY SERIES — LUBRICANT FREE

	FLUID TEMPERATURE	MAXIMUM WORKING PRESSURE (NORMAL TEMPERATURE) MPa(kgf/cm ²)	
		15mm—80mm	100mm
U-PVC	0°C ~ 50°C	1.0 {10.2}	0.5 {5.1}

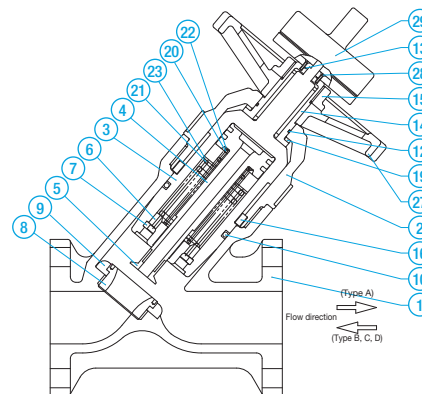
NOTES The maximum working pressure is the value including the water hammer pressure. Be careful that the maximum working pressure is not exceeded during use.
* Concerning the allowable pressure for each temperature and material, see the technical documents at the end of this catalog.



PARTS LIST MANUAL



25 mm - 100 mm



PART NO. / NAME	QTY	MATERIAL	PART NO. / NAME	QTY	MATERIAL
1 BODY	1	U-PVC	12 O-RING (C)	1	EPDM
2 BONNET	1	U-PVC	13 O-RING (D)	1	EPDM
3 CYLINDER	1	U-PVC	14 SLEEVE	1	C3604
4 PISTON	1	U-PVC	15 CAP	1	U-PVC
5 PLUG	1	U-PVC	16 KEY	2	PP (15 - 20mm) U-PVC (25 - 100mm)
6 SPRING SEAT	1	U-PVC	17 THRUST RING	1	PP
7 STOP RING	1	PVDF	18 SPRING (A)	1	SUS304*
8 ORIFICE	1	U-PVC	19 SPRING (B)	1	SUS304*
9 SEAT	1	EPDM, etc.	20 WASHER (B)	1	U-PVC
10 O-RING (A)	1 (15 - 20 mm) 2 (25 - 100 mm)	EPDM, etc. (1)			

Used for 15 - 20 mm only.

PART NO. / NAME	QTY	MATERIAL
11 O-RING (B)	1	EPDM, etc.
17 UNION NUT	1	U-PVC
18 NUT	1	ABS
24 HANDLE BASE	1	ABS
25 HANDLE COVER	1	PC
26 CROSS RECESSED RAISED COUNTERSUNK HEAD SCREW	4	SUS304

Used for 25 - 100 mm only.

PART NO. / NAME	QTY	MATERIAL
22 WASHER (A)	1	U-PVC
27 HANDLE	1	PP
28 FASTENING SCREW	4	C3604
29 OPENING DEGREE INDICATOR	1 SET	ABS, etc.

NOTE (1) For FKM, complete closure is not available.

* SUS304 is coated with fluororesin.

PRODUCT MODEL CODE LIST
[MANUAL](#)

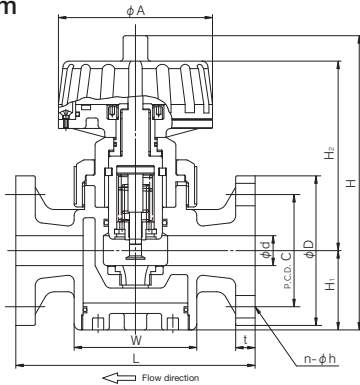
ACTUATION	TYPE	OPERATING SYSTEM	BODY MATERIAL	SEAL MATERIAL	CONNECTION	STANDARD	SIZE	HIGH PURITY SERIES
V	CF	*T	U	E	F	*	***	1
V MANUAL VALVE	CF CONSTANT FLOW	AT TYPE A BT TYPE B CT TYPE C DT TYPE D	U U-PVC	E EPDM V FKM	F FLANGED	1 JIS 10K 5 JIS 5K	015 15mm 100 100mm	1 LUBRICANT FREE

[MANUAL](#)

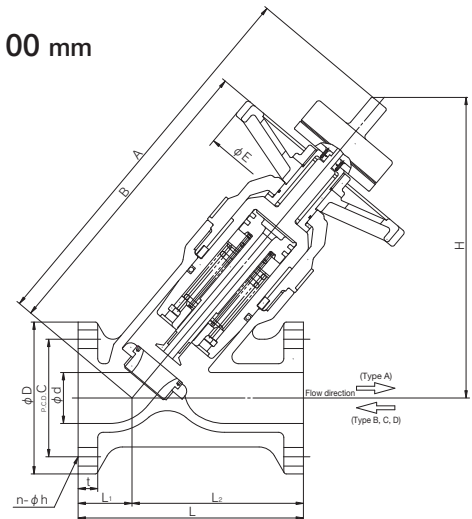
CONSTANT FLOW VALVE

TYPE—VCF
 CONNECTION / FLANGED—JIS, DIN, ANSI

15 mm – 20 mm



25 mm – 100 mm



■ JIS, DIN (Unit: mm)

mm	d	W	A	H ₁	H ₂	H	L	t	JIS								DIN			
									JIS 5K				JIS 10K				DIN PN10			
									D	C	n	h	D	C	n	h	D	C	n	h
15	16	82×82	103	51	129	197	160	12	80	60	4	12	95	70	4	15	95	65	4	14
20	20	82×82	103	53	127	197	160	13	85	65	4	12	100	75	4	15	100	75	4	14

■ JIS, DIN (Unit: mm)

mm	d	L ₁	L ₂	A	B	H	E	L	t	JIS								DIN			
										JIS 5K				JIS 10K				DIN PN10			
										D	C	n	h	D	C	n	h	D	C	n	h
25	25	40	120	272	201	218	150	160	14	95	75	4	12	125	90	4	19	115	85	4	14
50	52	55	175	390	309	307	210	230	20	130	105	4	15	155	120	4	19	165	125	4	18
80	78	70	210	484	387	377	210	280	22	180	145	4	19	185	150	8	19	200	160	8	18
100	100	85	325	623	483	446	250	410	22	200	165	8	19	210	175	8	19	220	180	8	18

■ ANSI (Unit: inch)

inch	mm	d	W	A	H ₁	H ₂	H	L	t	ANSI							
										ANSI CLASS150							
										D	C	n	h	D	C	n	h
1/2	15	0.63	3.23×3.23	4.06	2.01	5.08	7.76	6.30	0.47	3.50	2.38	4	0.63	3.86	2.76	4	0.63
3/4	20	0.79	3.23×3.24	4.06	2.09	5.00	7.76	6.30	0.51	3.86	2.76	4	0.63				

■ ANSI (Unit: inch)

inch	mm	d	L ₁	L ₂	A	B	H	E	L	t	ANSI							
											ANSI CLASS150							
											D	C	n	h	D	C	n	h
1	25	0.98	1.57	4.72	10.71	7.91	8.58	5.91	6.30	0.55	4.25	3.13	4	0.63	5.98	4.74	4	0.75
2	50	2.05	2.17	6.89	15.35	12.17	12.09	8.27	9.06	0.79	7.25	6.00	8	0.75	8.66	7.50	8	0.75
3	80	3.07	2.76	8.27	19.06	15.24	14.84	8.27	11.02	0.87								
4	100	3.94	3.35	12.80	24.53	19.02	17.56	9.84	16.14	0.87								

NEEDLE VALVE

- OUR ORIGINAL SPECIAL SHAPE PLUG ALLOWS FOR HIGHLY ACCURATE FLOW CONTROL.
- SHUTOFF VALVE AND RUBBER SEAT ALLOW FOR COMPLETE SEALING.
- INDEPENDENT FROM SHUTOFF VALVE, IT MAINTAINS HIGH-ACCURACY CONTROL FUNCTION FOR A LONG PERIOD.
- INSPECTION AND CLEANING OF INSIDE OF THE VALVE CAN BE PERFORMED WITHOUT DISMOUNTING IT FROM THE PIPE, BY REMOVING THE CAP (15 mm, 20 mm).
- INTEGRALLY MOLDED BODY THAT IS LIGHTWEIGHT, ROBUST AND COMPACT.

BASIC SPECIFICATIONS

VALVE TYPE ————— **NEEDLE VALVE**
SIZE ————— **15 mm—25 mm (1/2 inch—1 inch)**
BODY MATERIAL ————— **U-PVC**
SEAL MATERIAL ————— **EPDM etc.**
CONNECTION / FLANGED — **JIS5K, JIS10K, DIN, ANSI**
HIGH PURITY SERIES — **LUBRICANT FREE**

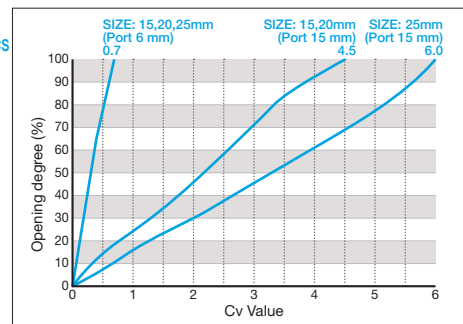
	FLUID TEMPERATURE	MAXIMUM WORKING PRESSURE (NORMAL TEMPERATURE) MPa(kgf/cm ²)
U-PVC	0°C ~ 50°C	1.0 {10.2}

NOTES The maximum working pressure is the value including the water hammer pressure. Be careful that the maximum working pressure is not exceeded during use.
 * Concerning the allowable pressure for each temperature and material, see "Asahi AV Piping Material Technical Document". * For FKM 25 mm, complete sealing is not available.

MANUAL

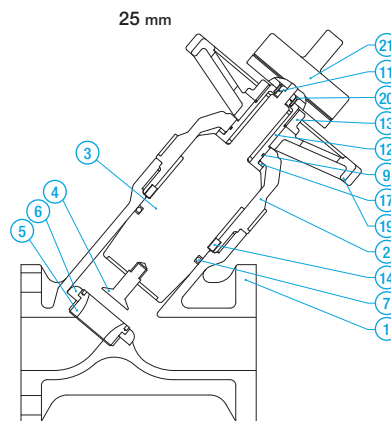
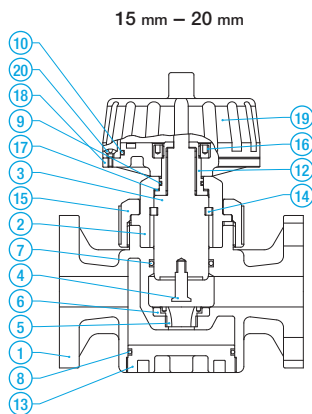


Flow characteristics



SIZE	PORT SIZE (mm)	
15mm, 20mm	6	15
25mm	6	15

PARTS LIST MANUAL



PART NO. / NAME	QTY	MATERIAL	PART NO. / NAME	QTY	MATERIAL
① BODY	1	U-PVC	⑬ CAP	1	U-PVC
② BONNET	1	U-PVC	⑭ KEY	2	PP(15-20mm) U-PVC(25mm)
③ CYLINDER	1	U-PVC	⑰ THRUST RING	1	PP
④ PLUG	1	U-PVC	⑱ HANDLE	1	PC(15-20mm) PP(25mm)
⑤ ORIFICE	1	U-PVC	⑳ MACHINE SCREW	4	SUS304(15-20mm) C3604(25mm)
⑥ SEAT	1	EPDM, etc.			
⑦ O-RING (A)	1	EPDM, etc. (1)			
⑨ O-RING (C)	1	EPDM			
⑫ SLEEVE	1	C3604			

Used for 15 - 20 mm only.

PART NO. / NAME	QTY	MATERIAL
⑧ O-RING (B)	1	EPDM, etc.
⑩ O-RING (D)	1	EPDM
⑮ UNION NUT	1	U-PVC
⑯ NUT	1	ABS
⑱ HANDLE BASE	1	U-PVC

Used for 25 mm only.

PART NO. / NAME	QTY	MATERIAL
⑪ O-RING (E)	1	EPDM
⑳ OPENING DEGREE INDICATOR	1 SET	U-PVC, etc.

NOTES (1) For FKM, complete closure is not available.

PRODUCT MODEL CODE LIST
[MANUAL](#)

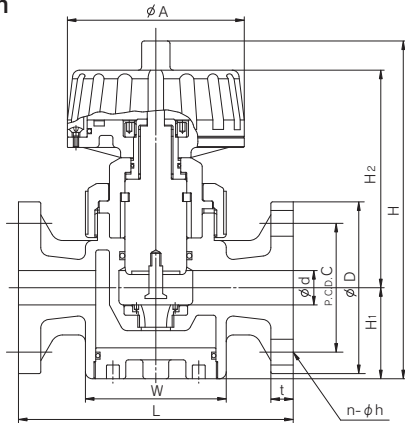
ACTUATION	TYPE	OPERATING SYSTEM	BODY MATERIAL	SEAL MATERIAL	CONNECTION	STANDARD	SIZE	HIGH PURITY SERIES
V	ND	MH	U	E	F	*	***	1
V MANUAL VALVE	ND NEEDLE	MH ROUND HANDLE	U U-PVC	E EPDM V FKM	F FLANGED	1 JIS 10K 5 JIS 5K	015 15mm 025 25mm	1 LUBRICANT FREE

[MANUAL](#)

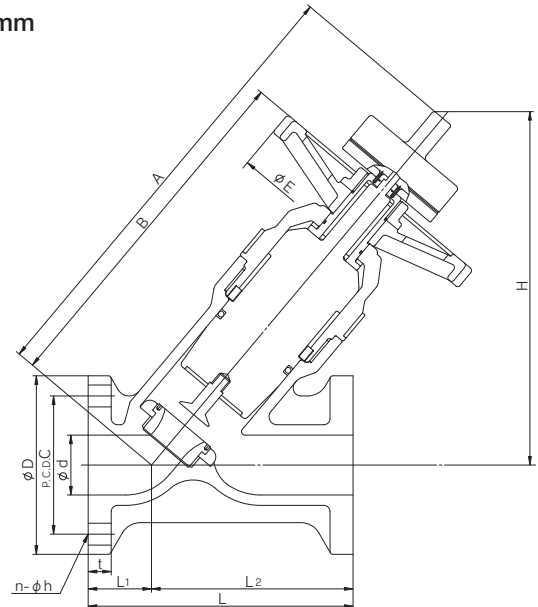
NEEDLE VALVE

TYPE—VNDMH
 CONNECTION / FLANGED—JIS, DIN, ANSI

15 mm – 20 mm



25 mm



■ JIS, DIN (Unit: mm)

mm	D ₁	W	A	H ₁	H ₂	H ₃	L	t	JIS				DIN			
									JIS 10K				DIN PN10			
									D	C	n	h	D	C	n	h
15	16	82×82	103	51	129	197	160	12	95	70	4	15	95	65	4	14
20	20	82×82	103	53	127	197	160	13	100	75	4	15	105	75	4	14

■ JIS, DIN (Unit: mm)

mm	d	L ₁	L ₂	A	B	H	E	L	t	JIS				DIN			
										JIS 10K				DIN PN10			
										D	C	n	h	D	C	n	h
25	25	40	120	272	201	218	150	160	14	125	90	4	19	115	85	4	14

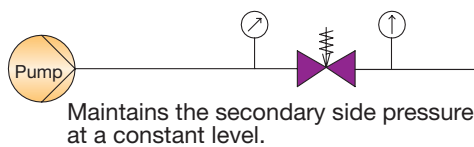
■ ANSI (Unit: inch)

inch	mm	D ₁	W	A	H ₁	H ₂	H ₃	L	t	ANSI			
										ANSI CLASS150			
										D	C	n	h
1/2	15	0.63	3.23×3.23	4.06	2.01	5.08	7.76	6.30	0.47	3.50	2.38	4	0.63
3/4	20	0.79	3.23×3.23	4.06	2.09	5.00	7.76	6.30	0.51	3.86	2.76	4	0.63

■ ANSI (Unit: inch)

inch	mm	d	L ₁	L ₂	A	B	H	E	L	t	ANSI			
											ANSI CLASS150			
											D	C	n	h
1	25	0.98	1.57	4.72	10.71	7.91	8.58	5.91	6.30	0.55	4.25	3.13	4	0.63

SELF CONTROL VALVE PRESSURE REDUCING TYPE



Even when the primary side pressure fluctuates, the valve maintains secondary side pressure constant.

It works using the fluid pressure only, without using any auxiliary power.

Against the fluid power pressing up the piston, the valve uses the force of compression spring to press down the piston so as to keep balance.

For appropriate flow range, see P.237.

BASIC SPECIFICATIONS

- VALVE TYPE ————— SELF CONTROL VALVE PRESSURE REDUCING TYPE
- SIZE ————— 15 mm—50 mm (1/2 inch—2 inch)
- BODY MATERIAL ——— **U-PVC**
- SEAL MATERIAL ——— **EPDM** etc.
- CONNECTION / FLANGED — **JIS, DIN, ANSI**
- SOCKET — **JIS, DIN, ANSI**
- THREADED— **Rc, RP, NPT**
- WORKING TEMPERATURE RANGE — **0-50°C**
- MAX.ALLOWABLE WORKING PRESSURE — **1.0MPa**
- ALLOWABLE PRESSURE RANGE — **0.05-0.9MPa**
- HIGH PURITY SERIES** — **WETTED PARTS LUBRICANT FREE**

MANUAL



PRODUCT MODEL CODE LIST	ACTUATION	TYPE	OPERATING SYSTEM	BODY MATERIAL	SEAL MATERIAL	CONNECTION	STANDARD	SIZE	HIGH PURITY SERIES
MANUAL	V	PR	2T	U	*	*	*	***	2
	V MANUAL VALVE	PR SELF CONTROL	2T PRESSURE REDUCING TYPE	U U-PVC	E EPDM V FKM Z FKM (PTFE coating)	S SOCKET N THREADED F FLANGED	J JIS 1 JIS10K D DIN A ANSI	015 15mm 050 50mm	2 WETTED PARTS LUBRICANT FREE

TYPE What should be filled in the "xxx" section?

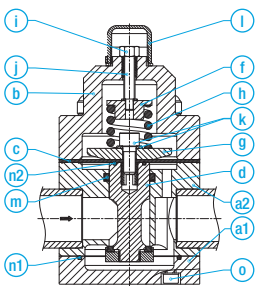
NOTES (1) The 15-40 mm (piston) type and 50 mm (diaphragm) type have different internal structure. Be careful when selecting the type of seal material.
(2) For 50 mm, select either E: EPDM or Z: FKM (PTFE coating). (For 15-40 mm, select E: EPDM or V: FKM.)

MANUAL

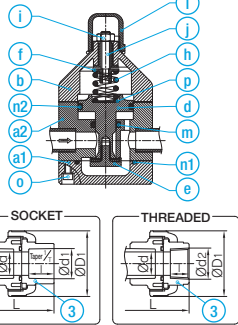
SELF CONTROL VALVE PRESSURE REDUCING TYPE

CONNECTION / FLANGED, SOCKET — JIS, DIN, ANSI THREADED — Rc, RP, NPT

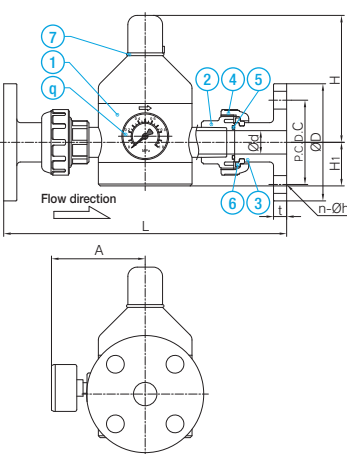
50 mm V82 INSIDE STRUCTURE DIAGRAM



15 mm - 40 mm V182 INSIDE STRUCTURE DIAGRAM



FLANGED



PART NO. / NAME	QTY	MATERIAL	MEMO
a1 BODY (LOWER)	1	U-PVC	
a2 BODY (UPPER)	1	U-PVC	
b HOUSING	1	U-PVC	
c DIAPHRAGM	1	EPDM	Used for V82.
d PISTON	1	U-PVC	
e PISTON BASE	1	U-PVC	Used for V182.
f SPRING PLATE	1	Aluminum	
g COMPRESSOR	1	U-PVC	Used for V82.
h COMPRESSION SPRING	1	Spring steel	
i LOCK NUT	1	Polyamide	
j ADJUSTING SCREW	1	—	
k BOLT, WASHER	1	—	Used for V82.
l CAP	1	Polystyrene	
m RING SEAL	1	EPDM	
n1 O-RING (A)	1	EPDM	
n2 O-RING (B)	1	EPDM	
o BOLT, NUT, WASHER	4	—	
p SPRING SUPPORT PLATE	1	—	Used for V182.
q PRESSURE GAUGE	1	ABS, etc.	
2 PJ-BODY	2	U-PVC	SELF CONTROL VALVE DEDICATED FOR TRUE UNION
3 END CONNECTOR	2	U-PVC	
4 UNION NUT	2	U-PVC	
5 O-RING (C)	2	EPDM	
6 STOP RING	2	PVDF	Used for flanged type.
7 O-RING (D)	1	EPDM	

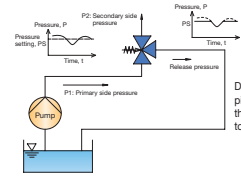
■ JIS, DIN (Unit: mm)

mm	JIS															DIN														
	FLANGED					SOCKET					THREADED					FLANGED DIN PN10/PN16					SOCKET					THREADED				
d	D1	H	H1	A	D	C	n	h	L	t	d1	ℓ	1/T	L	d2	ℓ	L	D	C	n	h	L	t	d1	ℓ	L	d2	ℓ	L	
15	15	48	103	30	90	95	70	4	15	221	12	22.11	20	1/34	186	Rc 1/2	15	180	95	65	4	14	208	12	20	16	180	Rp1/2	15	180
20	20	60	137	46	100	100	75	4	15	292	14	26.13	24	1/34	248	Rc 3/4	17	240	105	75	4	14	270	14	25	19	239	Rp3/4	17	240
25	25	70	137	46	100	125	90	4	19	302	14	32.16	27	1/34	260	Rc 1	20	246	115	85	4	14	275	14	32	22	246	Rp1	20	246
32	31	82	178	55	115	135	100	4	19	346	16	38.19	30	1/34	318	Rc 1 1/4	22	306	140	100	4	18	338	16	40	26	306	Rp1 1/4	22	306
40	40	100	178	55	115	140	105	4	19	379	16	48.21	37	1/37	356	Rc 1 1/2	25	330	150	110	4	18	367	16	50	31	331	Rp1 1/2	25	330
50	51	106	213	75	125	155	120	4	19	395	16	60.25	42	1/37	380	Rc 2	28	358	165	125	4	18	395	16	63	38	388.2	Rp2	28	358

■ ANSI (Unit: inch)

inch	ANSI																							
	FLANGED ANSI CLASS 150					SOCKET					THREADED													
mm	d	D1	H	H1	A	D	C	n	h	L	t	d1	d1'	ℓ	L	d2	ℓ	L	d2	ℓ	L	d2	ℓ	L
1/2	15	0.59	1.89	4.06	1.18	3.54	3.50	2.38	4	0.62	8.70	0.47	0.848	0.836	0.875	7.52	1/2 -14NPT	0.59	7.09					
3/4	20	0.79	2.36	5.39	1.81	3.94	3.88	2.75	4	0.62	11.50	0.55	1.058	1.046	1.000	9.80	3/4 -14NPT	0.67	9.45					
1	25	0.98	2.76	5.39	1.81	3.94	4.25	3.12	4	0.62	11.89	0.55	1.325	1.310	1.125	10.24	1 -11 1/2NPT	0.79	9.69					
1 1/4	32	1.22	3.23	7.01	2.17	4.53	4.62	3.5	4	0.62	13.62	0.63	1.670	1.655	1.250	12.60	1 1/4 -11 1/2NPT	0.87	12.05					
1 1/2	40	1.57	3.94	7.01	2.17	4.53	5.00	3.88	4	0.62	14.92	0.63	1.912	1.894	1.375	13.82	1 1/2 -11 1/2NPT	0.98	12.99					
2	50	2.01	4.17	8.39	2.95	4.92	6.00	4.75	4	0.75	15.55	0.63	2.387	2.369	1.500	14.57	2 -11 1/2NPT	1.10	14.09					

SELF CONTROL VALVE PRESSURE RELIEF TYPE



This valve is used for piping lines and equipment where excessive pressure needs to be prevented. The T-shaped pipe structure allows the fluid to flow in 3 directions. In addition to the intake and discharge ports located sideways in a straight line (horizontal direction), there is also a discharge port on the lateral side (vertical direction). If the pressure in the horizontal direction exceeds the set pressure, the valve will open so that the fluid is discharged from the vertically located discharge port. The pressure dispersion and closure operation allow the valve to maintain the horizontal pressure constant and reduce the peak pressure. For appropriate flow range, see P.237.

BASIC SPECIFICATIONS

VALVE TYPE ————— **SELF CONTROL VALVE PRESSURE REDUCING TYPE**

SIZE ————— **15 mm—50 mm (1/2 inch—2 inch)**

BODY MATERIAL ————— **U-PVC**

SEAL MATERIAL ————— **EPDM** etc.

CONNECTION / FLANGED — **JIS, DIN, ANSI**

SOCKET — **JIS, DIN, ANSI**

THREADED — **Rc, RP, NPT**

WORKING TEMPERATURE RANGE — **0-50°C**

MAX.ALLOWABLE WORKING PRESSURE — **1.0MPa**

ALLOWABLE PRESSURE RANGE — **0.05-0.9MPa**

HIGH PURITY SERIES — **WETTED PARTS LUBRICANT FREE**

MANUAL

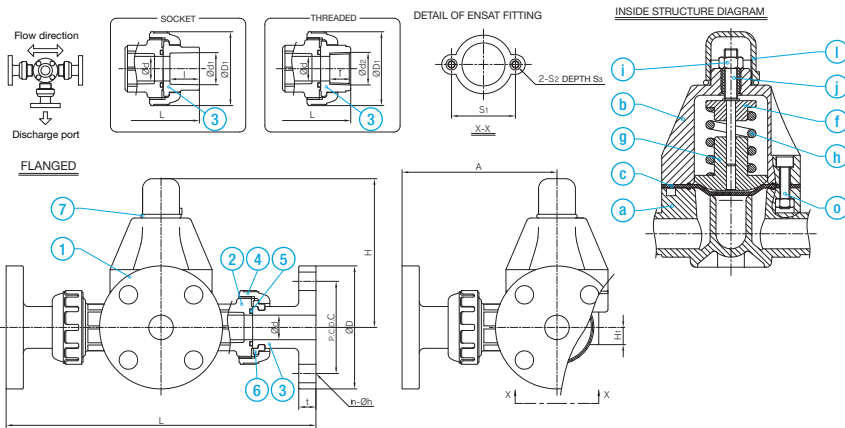


PRODUCT MODEL CODE LIST	ACTUATION	TYPE	OPERATING SYSTEM	BODY MATERIAL	SEAL MATERIAL	CONNECTION	STANDARD	SIZE	HIGH PURITY SERIES
MANUAL	V	PR	5T	U	*	*	*	***	2
	V MANUAL VALVE	PR SELF CONTROL	5T PRESSURE RELIEF TYPE	U U-PVC	E EPDM Z FKM (PTFE coating)	S SOCKET N THREADED F FLANGED	J JIS 1 JIS10K D DIN A ANSI	015 15mm 050 50mm	2 WETTED PARTS LUBRICANT FREE
<p>TYPE What should be filled in the "xxx" section?</p>									

MANUAL

SELF CONTROL VALVE PRESSURE RELIEF TYPE

CONNECTION / FLANGED, SOCKET — JIS, DIN, ANSI THREADED — Rc, RP, NPT



PART NO. / NAME	QTY	MATERIAL	MEMO
a BODY	1	U-PVC	
b HOUSING	1	U-PVC	
c DIAPHRAGM	1	□EPDM, □FKM-PTFE COATING	
f SPRING PLATE	1	Aluminum	
g COMPRESSOR	1	PP	
h COMPRESSION SPRING	1	Spring steel	
i LOCK NUT	1	Polyamide	
j ADJUSTING SCREW	1	—	
l CAP	1	Polystyrene	
o BOLT, WASHER, NUT	4	—	
2 PJ-BODY	2	U-PVC	SELF CONTROL VALVE DEDICATED FOR TRUE UNION
3 END CONNECTOR	2	U-PVC	
4 UNION NUT	2	U-PVC	
5 O-RING (C)	2	EPDM (FKM*)	
6 STOP RING	2	PVDF	Used for flanged type.
7 O-RING (D)	1	EPDM	

* When the diaphragm is FKM with PTFE coating.

■ JIS, DIN (Unit: mm)

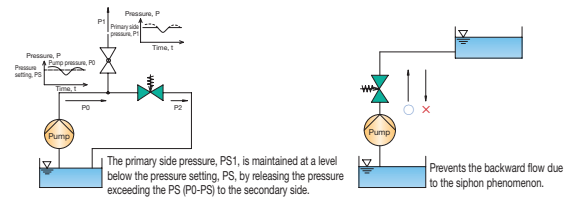
mm	JIS												DIN																						
	FLANGED				SOCKET				THREADED				FLANGED DIN PN10/PN16	SOCKET	THREADED																				
D	C	n	h	L	t	A	d ₁	ℓ	1/T	L	A	d ₂	ℓ	L	A																				
15	15	48	120	20	90	M6	9	95	70	4	15	221	12	110.5	22.11	20	1/34	186	93	Rc 1/2	15	180	90	95	65	4	14	208	12	20	16	180	Rp 1/2	15	180
20	20	60	120	20	100	M6	9	100	75	4	15	252	14	126.0	26.13	24	1/34	208	104	Rc 3/4	17	200	100	105	75	4	14	230	14	25	19	199	Rp 3/4	17	240
25	25	70	175	27	100	M6	9	125	90	4	19	302	14	151.0	32.16	27	1/34	260	130	Rc 1	20	246	123	115	85	4	14	275	14	32	22	246	Rp 1	20	246
32	31	82	159	43	115	M6	9	135	100	4	19	296	16	148.0	38.19	30	1/34	268	134	Rc 1 1/4	22	256	128	140	100	4	18	286	16	40	26	256	Rp 1 1/4	22	306
40	40	100	250	43	115	-	-	140	105	4	19	379	16	189.5	48.21	37	1/37	356	178	Rc 1 1/2	25	330	165	150	110	4	18	367	16	50	31	331	Rp 1 1/2	25	330
50	51	106	250	43	125	-	-	155	120	4	19	395	16	197.5	60.25	42	1/37	380	190	Rc 2	28	358	179	165	125	4	18	395	16	63	38	388.2	Rp 2	28	358

■ ANSI (Unit: inch)

inch	mm	ANSI																			
		FLANGED ANSI CLASS 150						SOCKET			THREADED										
D	C	n	h	L	t	d ₁	d ₁ '	ℓ	L	A	d ₂	ℓ	L								
1/2	15	0.59	1.89	4.72	0.79	3.54	M6	0.35	3.50	2.38	4	0.62	8.70	0.47	0.848	0.836	0.875	7.52	1/2 -14NPT	0.59	7.09
3/4	20	0.79	2.36	4.72	0.79	3.94	M6	0.35	3.88	2.75	4	0.62	9.92	0.55	1.058	1.046	1.000	8.23	3/4 -14NPT	0.67	7.87
1	25	0.98	2.76	6.89	1.06	3.94	M6	0.35	4.25	3.12	4	0.62	11.89	0.55	1.325	1.310	1.125	10.24	1 -11 1/2NPT	0.79	9.69
1 1/4	32	1.22	3.23	6.26	1.69	4.53	M6	0.35	4.62	3.5	4	0.62	11.65	0.63	1.670	1.655	1.250	10.63	1 1/4 -11 1/2NPT	0.87	10.08
1 1/2	40	1.57	3.94	9.84	1.69	4.53	-	-	5.00	3.88	4	0.62	14.92	0.63	1.912	1.894	1.375	13.82	1 1/2 -11 1/2NPT	0.98	12.99
2	50	2.01	4.17	9.84	1.69	4.92	-	-	6.00	4.75	4	0.75	15.55	0.63	2.387	2.369	1.500	14.57	2 -11 1/2NPT	1.10	14.09

SELF CONTROL VALVE PRESSURE RETAINING TYPE

The pressure retaining type maintains the primary side pressure constant. The valve opens when the primary side pressure exceeds the set value and closes when the pressure falls below the set value. It works using the fluid pressure only, without using any auxiliary power. Against the fluid power pressing up the diaphragm, the valve uses the force of compression spring to press down the diaphragm so as to keep balance. For appropriate flow range, see P.237.



BASIC SPECIFICATIONS

VALVE TYPE — SELF CONTROL VALVE PRESSURE RETAINING TYPE
SIZE — 15 mm—50 mm (1/2 inch—2 inch)
BODY MATERIAL — U-PVC
SEAL MATERIAL — EPDM etc.
CONNECTION / FLANGED — JIS, DIN, ANSI
SOCKET — JIS, DIN, ANSI
THREADED — Rc, RP, NPT
WORKING TEMPERATURE RANGE — 0-50°C
MAX.ALLOWABLE WORKING PRESSURE — 1.0MPa
ALLOWABLE PRESSURE RANGE — 0.05-0.9MPa
HIGH PURITY SERIES — WETTED PARTS LUBRICANT FREE

MANUAL



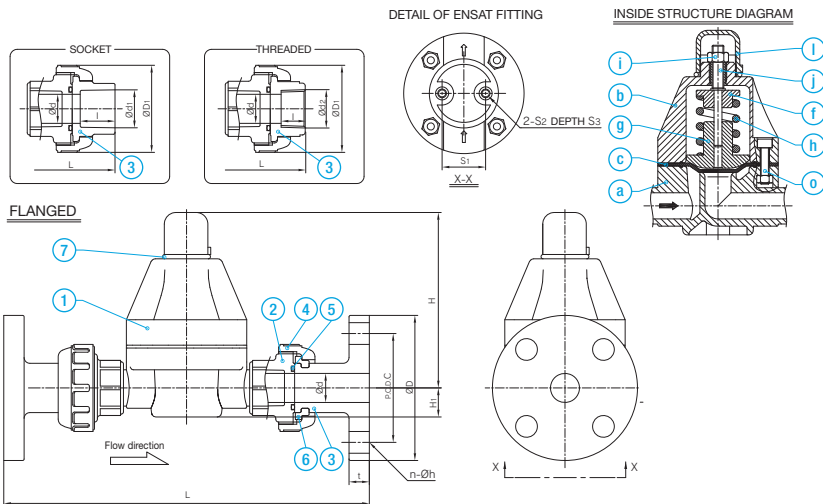
PRODUCT MODEL CODE LIST	ACTUATION	TYPE	OPERATING SYSTEM	BODY MATERIAL	SEAL MATERIAL	CONNECTION	STANDARD	SIZE	HIGH PURITY SERIES
MANUAL	V	PR	6T	U	*	*	*	***	2
	V MANUAL VALVE	PR SELF CONTROL	6T PRESSURE RETAINING TYPE	U U-PVC	E EPDM Z FKM (PTFE coating)	S SOCKET N THREADED F FLANGED	J JIS I JIS10K D DIN A ANSI	015 15mm 050 50mm	2 WETTED PARTS LUBRICANT FREE

TYPE What should be filled in the "xxx" section?

MANUAL

SELF CONTROL VALVE PRESSURE RETAINING TYPE

CONNECTION / FLANGED, SOCKET — JIS, DIN, ANSI THREADED — Rc, RP, NPT



PART NO. / NAME	QTY	MATERIAL	MEMO
a BODY	1	U-PVC	
b HOUSING	1	U-PVC	
c DIAPHRAGM	1	□ EPDM, □ FKM-PTFE COATING	
f SPRING PLATE	1	ALUMINUM	
g COMPRESSOR	1	PP	
h COMPRESSION SPRING	1	Spring steel	
i LOCK NUT	1	Polyamide	
j ADJUSTING SCREW	1	—	
l CAP	1	Polystyrene	
o BOLT, WASHER, NUT	4	—	
2 PJ-BODY	2	U-PVC	SELF CONTROL VALVE DEDICATED FOR TRUE UNION
3 END CONNECTOR	2	U-PVC	
4 UNION NUT	2	U-PVC	
5 O-RING (C)	2	EPDM(FKM*)	
6 STOP RING	2	PVDF	Used for flanged type.
7 O-RING (D)	1	EPDM	

* When the diaphragm is FKM with PTFE coating.

■ JIS, DIN (Unit: mm)

mm	d	D1	H	H1	S1	S2	S3	JIS												DIN												
								FLANGED				SOCKET				THREADED				FLANGED DIN PN10/PN16				SOCKET				THREADED				
D	C	n	h	L	t	d1	ℓ	1/T	L	d2	ℓ	L	D	C	n	h	L	t	d1	ℓ	L	D	C	n	h	L	t	d1	ℓ	L		
15	15	48	120	20	29	M6	16	95	70	4	15	221	12	22.11	20	1/34	186	Rc 1/2	15	180	95	65	4	14	208	12	20	16	180	Rp1/2	15	180
20	20	60	120	20	29	M6	16	100	76	4	15	252	14	26.13	24	1/34	208	Rc 3/4	17	200	105	75	4	14	230	14	25	19	199	Rp3/4	17	240
25	25	70	175	27	47	M6	17	125	90	4	19	302	14	32.16	27	1/34	260	Rc 1	20	246	115	85	4	14	275	14	32	22	246	Rp1	20	246
32	31	82	159	43	47	M6	17	135	100	4	19	296	16	38.19	30	1/34	268	Rc 1 1/4	22	256	140	100	4	18	286	16	40	26	256	Rp1 1/4	22	306
40	40	100	250	43	-	-	-	140	105	4	19	379	16	48.21	37	1/37	356	Rc 1 1/2	25	330	150	110	4	18	367	16	50	31	331	Rp1 1/2	25	330
50	51	106	250	43	-	-	-	155	120	4	19	395	16	60.25	42	1/37	380	Rc 2	28	358	165	125	4	18	395	16	63	38	388.2	Rp2	28	358

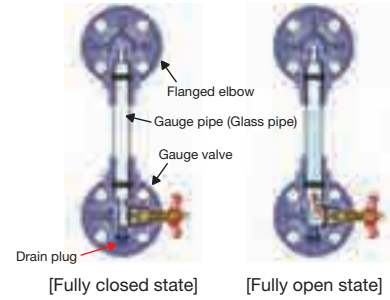
■ ANSI (Unit: inch)

inch	mm	d	D1	H	H1	S1	S2	S3	ANSI																																		
									FLANGED ANSI CLASS 150				SOCKET				THREADED																										
D	C	n	h	L	t	d1	d1'	ℓ	L	d2	ℓ	L	D	C	n	h	L	t	d1	d1'	ℓ	L	D	C	n	h	L	t	d1	ℓ	L												
1/2	15	0.59	1.89	4.72	0.79	1.14	M6	0.63	3.50	2.38	4	0.62	8.70	0.47	0.848	0.836	0.875	7.52	1/2-14NPT	0.59	7.09	3/4	20	0.79	2.36	4.72	0.79	1.14	M6	0.63	3.88	2.75	4	0.62	9.92	0.55	1.058	1.046	1.000	8.23	3/4-14NPT	0.67	7.87
1	25	0.98	2.76	6.89	1.06	1.85	M6	0.67	4.25	3.12	4	0.62	11.89	0.55	1.325	1.310	1.125	10.24	1-11 1/2NPT	0.79	9.69	1 1/4	32	1.22	3.23	6.26	1.69	1.85	M6	0.67	4.62	3.5	4	0.62	11.65	0.63	1.670	1.655	1.250	10.63	1 1/4-11 1/2NPT	0.87	10.08
1 1/4	40	1.57	3.94	9.84	1.69	-	-	-	5.00	3.88	4	0.62	14.92	0.63	1.912	1.894	1.375	13.82	1 1/2-11 1/2NPT	0.98	12.99	2	50	2.01	4.17	9.84	1.69	-	-	-	6.00	4.75	4	0.75	15.55	0.63	2.387	2.369	1.500	14.57	2-11 1/2NPT	1.10	14.09

GAUGE VALVE

- THE WETTED PART MADE OF CORROSION-RESISTANT PLASTIC. SEALING WITH DIAPHRAGM.
- EASY TO SET, ONLY REQUIRING THE GAUGE PIPE AND TIGHTENING THE UNION NUT.
- EQUIPPED WITH DRAIN PLUG USEFUL FOR MAINTENANCE (ALLOWING FOR COLLECTION OF SAMPLE SOLUTION).

■ The top of the gauge pipe can be fixed using a flanged elbow. (25 mm only. See the figure below.)



BASIC SPECIFICATIONS

VALVE TYPE ————— **GAUGE VALVE**
SIZE ————— **20 mm, 25 mm (3/4 inch, 1 inch)**
BODY MATERIAL ————— **U-PVC** **PP**
SEAL MATERIAL / O RING — **EPDM** **PTFE** etc.
CONNECTION / FLANGED — **JIS10K, DIN, ANSI**

- O.D. OF GAUGE PIPE (GLASS PIPE) MEETS $\phi 18$ FOR 20mm, $\phi 26$ FOR 25mm.
- SCREW OF DRAIN PLUG IS G1/4 FOR 20mm AND 25mm.

	FLUID TEMPERATURE	MAXIMUM WORKING PRESSURE (NORMAL TEMPERATURE) MPa(kgf/cm ²)
U-PVC	0°C ~ 40°C	0.5 {5.1}
	41°C ~ 50°C	0.4 {4.1}
	51°C ~ 80°C	—
PP	0°C ~ 40°C	0.5 {5.1}
	41°C ~ 50°C	0.4 {4.1}
	51°C ~ 80°C	0.3 {3.1}

NOTE The maximum working pressure is the value including the water hammer pressure. Be careful that the maximum working pressure is not exceeded during use.

* Concerning the allowable pressure for each temperature and material, see the technical documents at the end of this catalog.

MANUAL

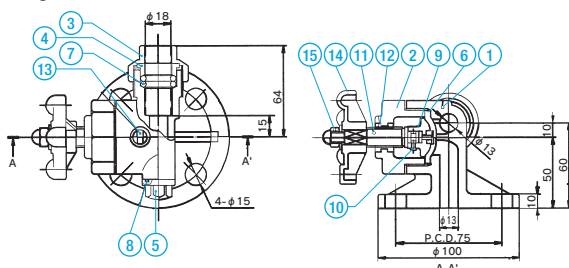


MANUAL

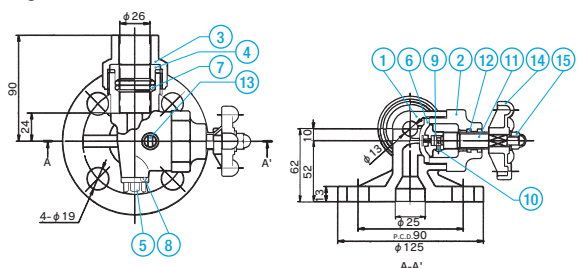
GAUGE VALVE

CONNECTION / FLANGED — JIS, DIN, ANSI

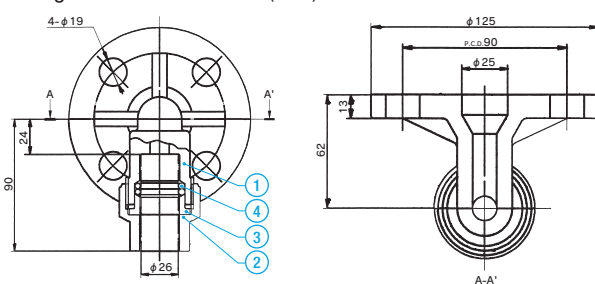
Gauge valve JIS 10K: 20 mm (3/4 inch)



Gauge valve JIS 10K: 25 mm (1 inch)



Flanged elbow JIS 10K: 25 mm (1 inch)



PART NO. / NAME	QTY	MATERIAL	PART NO. / NAME	QTY	MATERIAL
① BODY	1	U-PVC, PP	⑨ COMPRESSOR	1	PVDF
② BONNET	1	U-PVC, PP	⑩ COMPRESSOR PIN	2	SUS304
③ UNION NUT	1	U-PVC, PP	⑪ STEM	1	C3604
④ PACKING GLAND	1	U-PVC, PP	⑫ EMBEDDED BONNET FITTING	1	C3604
⑤ DRAIN PLUG	1	U-PVC, PP	⑬ MATERIAL INDICATION SHEET	1	Silver label
⑥ DIAPHRAGM	1	EPDM, PTFE, etc.	⑭ HANDLE	1	PP
⑦ O-RING (A)	2	EPDM, PTFE, etc.	⑮ NUT	1	SUS304
⑧ O-RING (B)	1	EPDM, PTFE, etc.			

NOTE When the diaphragm material is PTFE, the O-ring material is also PTFE.

■ JIS, DIN (Unit: mm)

										JIS10K				DIN PN10			
mm	d	L ₁	L ₂	L ₃	L ₄	L ₅	t	d ₁		D	C	n	h	D	C	n	h
20	13	60	64	50	10	15	10	18		100	75	4	15	105	75	4	14
25	25	62	90	52	10	24	13	26		125	90	4	19	115	85	4	14

■ ANSI (Unit: inch)

										ANSI Class150							
inch	mm	d	L ₁	L ₂	L ₃	L ₄	L ₅	t	d ₁	D	C	n	h	D	C	n	h
3/4	20	0.51	2.36	2.52	1.97	0.39	0.59	0.39	0.71	3.88	2.75	4	0.62				
1	25	0.98	2.44	3.54	2.05	0.39	0.94	0.51	1.02	4.25	3.12	4	0.62				

SEDIMENT STRAINER (TYPE Y)

- MATERIAL WITH HIGH RESISTANCE TO CORROSION, CHEMICALS AND WEAR.
- TRANSPARENT BODY THAT ALLOWS FOR CHECKING OF INSIDE FLOW.
- EASY SCREEN CLEANING, DISASSEMBLY/ASSEMBLY FOR REPLACEMENT AND MAINTENANCE.

[MANUAL](#)



BASIC SPECIFICATIONS

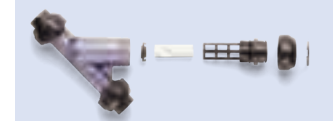
VALVE TYPE ————— **SEDIMENT STRAINER (TYPE Y)**
SIZE ————— **15 mm—100 mm (1/2 inch—4 inch)**
BODY MATERIAL ————— **U-PVC**
SEAL MATERIAL ————— **EPDM FKM etc.**
CONNECTION / FLANGED — **JIS5K, JIS10K, DIN, ANSI**
SOCKET — **JIS, DIN, ANSI**
THREADED — **Rc, Rp, NPT**

NOTES

- Avoid direct sunlight and store it indoors. Also avoid storing the valve in a place that may be exposed to high temperatures. ● Pay attention to the direction of flow when mounting the product on a pipe. (It is indicated by an arrow on the valve parts.)
- Clean the screen periodically. (Handle the screen with utmost care during cleaning.)
- Make sure during piping work that the valve is not exposed to direct sunlight.
- Note that volatile liquids, such as hydrogen peroxide solution (H₂O₂) and sodium hypochlorite (NaClO), may cause abnormal pressure increase in strainer. (When the internal pressure abnormally increases due to vaporization, the gas becomes compressive fluid. If the valve breaks in this state, it will be very dangerous, causing explosion and scattering of fragments.)
- The Y-shaped strainer, in particular, has such a structure that the corners are susceptible to the effects of repeated stress due to internal variations. Therefore, for lines where pulsation (including air hammer and water hammer) may occur, take adequate measures during piping installation. Otherwise breakage may occur. Also, perform periodic check (approx. once a year).
- Piping lines made of copper require particular attention because the effects of stress such as internal fluctuations are concentrated on the Y-shaped strainer.

	FLUID TEMPERATURE	MAXIMUM WORKING PRESSURE (NORMAL TEMPERATURE) MPa{kgf/cm ² }		CONNECTION METHOD		
		15mm—50mm	65mm—100mm	FLANGED	SOCKET	THREADED
U-PVC	0°C ~ 50°C	1.0 {10.2}	0.6 {6.1}	○	○	○

NOTE For information on chemical resistance, contact our sales office.



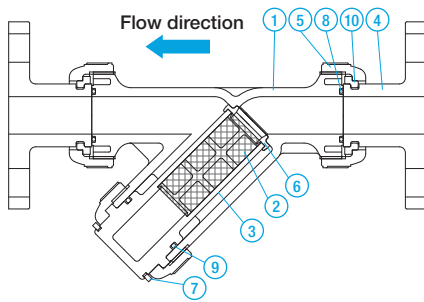
PRODUCT MODEL CODE LIST

[MANUAL](#)

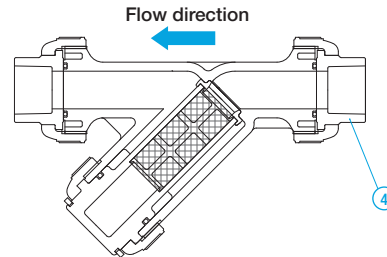
ACTUATION	TYPE	MESH TYPE	BODY MATERIAL	SEAL MATERIAL	CONNECTION	STANDARD	SIZE
V	YS	**	U	*	*	*	***
⋮	⋮	⋮	⋮	⋮	⋮	⋮	⋮
V MANUAL VALVE	YS SEDIMENT STRAINER (TYPE Y)	2U 20MESH 3U 30MESH 4U 40MESH	U U-PVC	E EPDM V FKM	S SOCKET N THREADED F FLANGED	J JIS 1 JIS10K 5 JIS 5K	015 15mm 100 100mm

PARTS LIST [MANUAL](#)

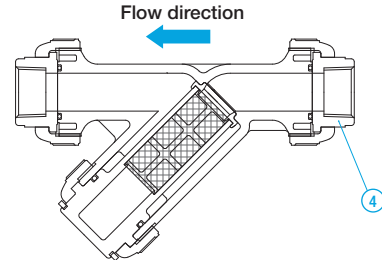
FLANGED



SOCKET



THREADED



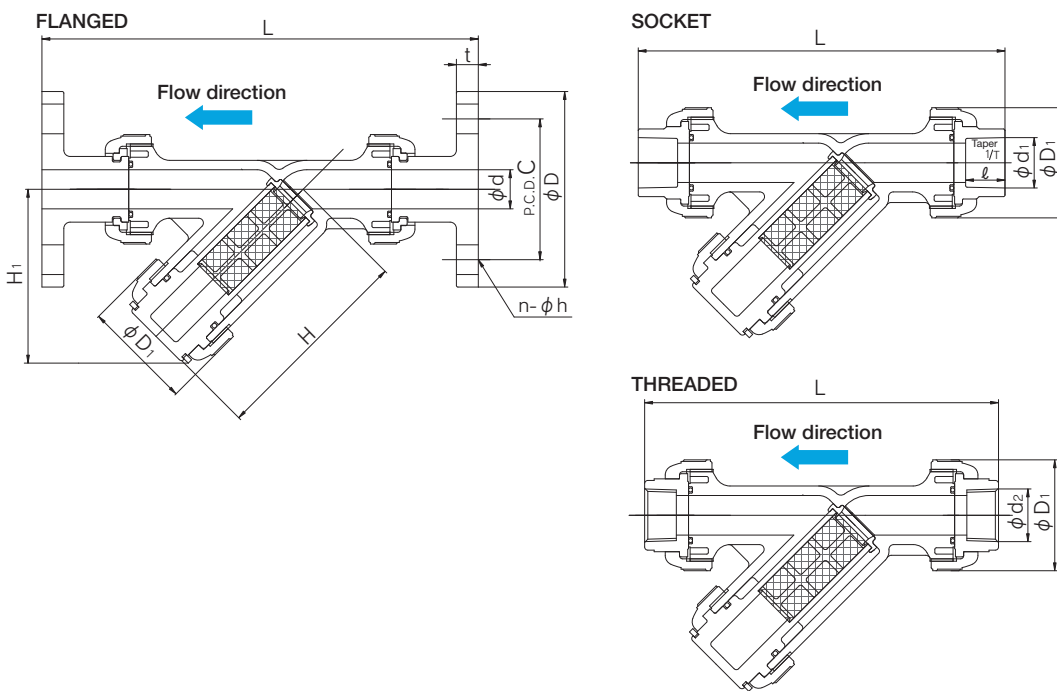
PART NO. / NAME	QTY	MATERIAL
① BODY	1	U-PVC (transparent)
② SCREEN (1)	1	U-PVC
③ SCREEN SUPPORT	1	U-PVC
④ END CONNECTOR	2	U-PVC
⑤ UNION NUT	3	U-PVC

PART NO. / NAME	QTY	MATERIAL
⑥ RETAINING RING	1	U-PVC
⑦ SPLIT RING	1	U-PVC
⑧ O-RING (A)	2	EPDM, FKM, etc.
⑨ O-RING (B)	1	EPDM, FKM, etc.
⑩ STOP RING (2)	2	PVDF

NOTES (1) 40 mesh : standard 30/20/60 mesh : custom-build *60 mesh: U-PVC (20 mesh) + PVDC (60 mesh) *For Stainless Steel mesh, consult us.
 (2) Flanged type only.

SEDIMENT STRAINER (TYPE Y)

CONNECTION / FLANGED, SOCKET—JIS, DIN, ANSI THREADED—Rc, Rp, NPT



■ JIS, DIN (Unit: mm)

							JIS															
							FLANGED				SOCKET				THREADED							
mm	d	D ₁	H	H ₁	H ₂	JIS 5K				JIS 10K				L	t	d ₁	ℓ	1/T	L	d ₂	ℓ	L
						D	C	n	h	D	C	n	h									
15	15	48	97	78	134	80	60	4	12	95	70	4	15	206	12	22.11	20	1/34	172	Rc 1/2	15	165
20	20	60	120	98	168	85	65	4	12	100	75	4	15	254	14	26.13	24	1/34	210	Rc 3/4	17	202
25	25	70	133	111	189	95	75	4	12	125	90	4	19	280	14	32.16	27	1/34	238	Rc 1	20	224
32	40	100	177	149	256	115	90	4	15	135	100	4	19	336	16	38.19	30	1/34	298	Rc 1 1/4	22	287
40	40	100	177	149	256	120	95	4	15	140	105	4	19	336	16	48.21	37	1/37	313	Rc 1 1/2	25	287
50	51	106	190	160	277	130	105	4	15	155	120	4	19	361	16	60.25	42	1/37	346	Rc 2	28	324
65	78	140	271	234	399	155	130	4	15	175	140	4	19	477	18	76.60	61	1/48	487	Rc 2 1/2	32	436
80	78	152	271	234	399	180	145	4	19	185	150	8	19	477	18	89.60	64	1/49	487	Rc 3	35	436
100	100	210	361	316	537	200	165	8	19	210	175	8	19	608	18	114.70	64	1/56	653	Rc 4	45	596

DIN												
mm	FLANGED DIN PN10					SOCKET				THREADED		
	D	C	n	h	L	t	d ₁	ℓ	L	d ₁	ℓ	L
15	95	65	4	14	193	12	20	16	165	Rp 1/2	15	165
20	105	75	4	14	232	14	25	19	201	Rp 3/4	17	202
25	115	85	4	14	253	14	32	22	224	Rp 1	20	224
32	140	100	4	18	336	16	40	26	298	Rp 1 1/4	22	287
40	150	110	4	18	324	16	50	31	288	Rp 1 1/2	25	287
50	165	125	4	18	361	16	63	38	337	Rp 2	28	324
65	185	145	4	18	477	18	75	44	455	Rp 2 1/2	32	436
80	200	160	8	18	483	18	90	51	457	Rp 3	35	436
100	220	180	8	18	608	18	110	61	607	Rp 4	45	596

■ ANSI (Unit: inch)

							ANSI												
							FLANGED					SOCKET				THREADED			
inch	mm	d	D ₁	H	H ₁	H ₂	ANSI CLASS150					ASTM SCH80				d ₂	ℓ	L	
							C	D	n	h	L	t	d ₁	d ₁ '	ℓ				L
1/2	15	0.59	1.89	3.82	3.07	5.28	3.50	2.38	4	0.62	8.11	0.47	0.848	0.836	0.875	6.93	1/2-14 NPT	0.59	6.50
3/4	20	0.79	2.36	4.72	3.86	6.61	3.88	2.75	4	0.62	10.00	0.55	1.058	1.046	1.000	8.31	3/4-14 NPT	0.67	7.95
1	25	0.98	2.76	5.24	4.37	7.44	4.25	3.12	4	0.62	11.02	0.55	1.325	1.310	1.125	9.37	1-11 1/2 NPT	0.79	8.82
1 1/4	32	1.57	3.94	6.97	5.87	10.08	4.61	3.50	4	0.62	13.23	0.63	1.670	1.655	1.250	11.73	1 1/4-11 1/2 NPT	0.87	11.30
1 1/2	40	1.57	3.94	6.97	5.87	10.08	5.00	3.88	4	0.62	13.23	0.63	1.912	1.894	1.375	12.13	1 1/2-11 1/2 NPT	0.98	11.30
2	50	2.01	4.17	7.48	6.30	10.91	6.00	4.75	4	0.75	14.21	0.63	2.387	2.369	1.500	13.31	2-11 1/2 NPT	1.10	12.76
2 1/2	65	3.07	5.51	10.67	9.21	15.71	7.01	5.49	4	0.75	18.78	0.71	2.889	2.868	1.752	17.95	2 1/2-8 NPT	1.26	17.17
3	80	3.07	5.98	10.67	9.21	15.71	7.50	6.00	4	0.75	18.78	0.71	3.516	3.492	1.875	17.83	3-8 NPT	1.38	17.17
4	100	3.94	8.27	14.21	12.44	21.14	9.00	7.50	8	0.75	23.94	0.71	4.518	4.491	2.000	23.07	4-8 NPT	1.77	23.46

GATE VALVE STANDARD TYPE (TYPE P) INSIDE SCREW CAP TYPE

- FOR ALL THE WETTED PARTS, CORROSION-RESISTANT MATERIAL IS USED.
- LIGHTWEIGHT AND HIGHLY IMPACT RESISTANT.
- MADE OF ROBUST, LIGHTWEIGHT AND IMPACT-RESISTANT HARD VINYL CHLORIDE (HI-PVC), WITH A WEIGHT OF 1/3 TO 1/5 COMPARED TO METAL VALVES.
- COMPACT DESIGN ALLOWS FOR SHALLOW DEPTH MOUNTING (SIZE: 32 - 200 mm).

BASIC SPECIFICATIONS

VALVE TYPE ————— GATE VALVE STANDARD TYPE (TYPE P)
INSIDE SCREW CAP TYPE

SIZE ————— 32 mm—350 mm (1 1/4 inch—14 inch)

BODY MATERIAL ————— HI-PVC

SEAL MATERIAL / O RING ————— EPDM etc.

CONNECTION / FLANGED — JIS10K, DIN, ANSI
THREADED—Rc, Rp, NPT

	FLUID TEMPERATURE	MAXIMUM WORKING PRESSURE (NORMAL TEMPERATURE) MPa(kgf/cm ²)			CONNECTION METHOD	
		32mm—200mm	250mm	300 mm—350 mm	FLANGED	THREADED
HI-PVC	-10℃~50℃	1.0 {10.2}	0.75 {7.7}	0.5 {5.1}	○	○

NOTES The maximum working pressure is the value including the water hammer pressure. Be careful that the maximum working pressure is not exceeded during use.

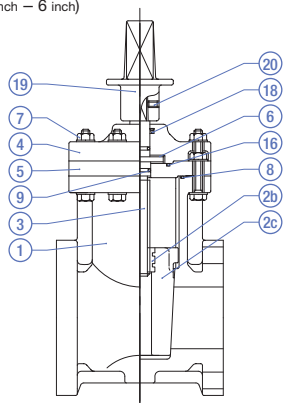
* Concerning the allowable pressure for each temperature and material, see the technical documents at the end of this catalog.

MANUAL

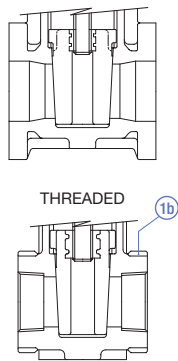


PARTS LIST MANUAL

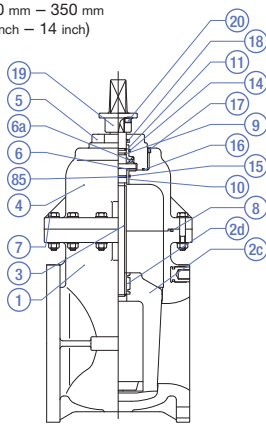
32 mm – 150 mm
(1 1/4 inch – 6 inch)



125mm, 150mm



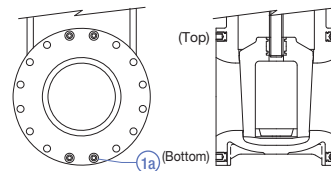
200 mm – 350 mm
(8 inch – 14 inch)



RIGHTWARD OPENING



DETAIL OF EMBEDDED BODY FITTING



PART NO. / NAME	QTY	MATERIAL	PART NO. / NAME	QTY	MATERIAL	PART NO. / NAME	QTY	MATERIAL
① BODY	1	HI-PVC	⑥ THRUST RING ⁽³⁾	1 set / 1	PP	⑮ O-RING (F) ⁽¹⁾	1	EPDM, etc.
⑮ EMBEDDED BODY FITTING ⁽¹⁾	-	C3604	⑥a THRUST BEARING ⁽¹⁾	1	SUJ2	⑯ O-RING (D)	1	EPDM, etc.
⑮b RING ⁽²⁾	1 SET	STPG	⑦ BOLT/NUT	—	SUS304	⑰ SET SCREW (A) ⁽¹⁾	1	SUS304
②c GATE (BODY) (A)	1	PP	⑧ O-RING (B)	1	EPDM, etc.	⑱ DUST SEAL	1	EPDM
② GATE (BODY) EMBEDDED FITTING (A)	1	BC6	⑨ O-RING (C)	2	EPDM, etc.	⑲ CAP (A)	1	FC200 (EPOXY RESIN POWDER COATING)
③ STEM	1	SUS403	⑩ BUSH (A) ⁽¹⁾	1	PP	⑳ SET SCREW (B)	1	SUS304
④ BONNET (LID) (A)	1	HI-PVC	⑪ BUSH (B) ⁽¹⁾	1	PP			
⑤ BONNET (LID) (B)	1	HI-PVC	⑬ O-RING (E) ⁽¹⁾	1	EPDM, etc.			

NOTES (1) is used for sizes of 200 mm or more (2) is used for threaded type (epoxy paint after unichrome plating).
(3) The quantity of use is 1 set (2 pieces) for 150 mm or less and 1 piece for 200 mm or more.

PRODUCT MODEL CODE LIST	ACTUATION	TYPE	OPERATING SYSTEM	STEM MATERIAL / OPEN DIRECTION	BODY MATERIAL	SEAL MATERIAL	CONNECTION / STANDARD	SIZE
MANUAL	V	CG	C	*	I	E	*	***
	V MANUAL VALVE	CG STANDARD TYPE	C TOP CAP	R SUS, RIGHT L SUS, LEFT	I HI-PVC	E EPDM	F1 FLANGED, 10K FD FLANGED, DIN FW FLANGED, WATERWORKS FA FLANGED, ANSI NJ THREADED, JIS ND THREADED, DIN NA THREADED, ANSI	032 32mm ? 350 350mm

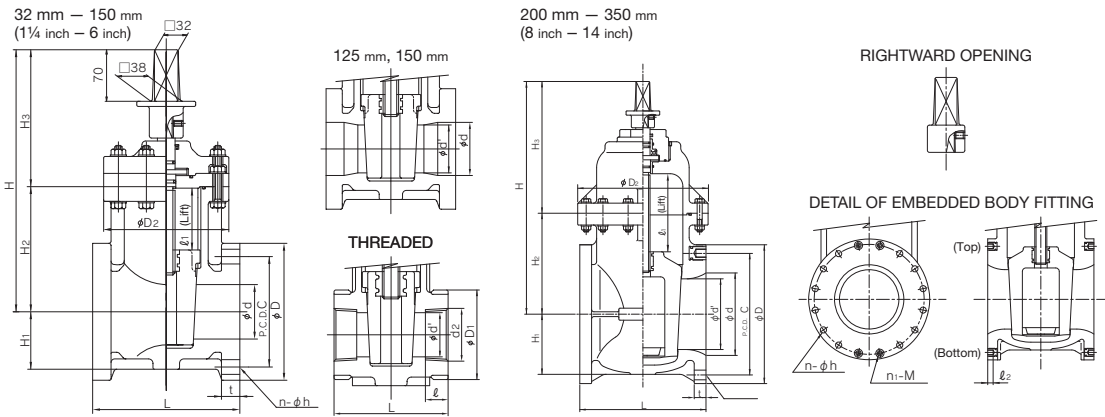
NOTES

- Tapping type is the standard for all the cases.
- The price above is the set price for the valve, full-face gaskets (2 pcs), and SUS plain washer.
- The product model code of size 80 mm compatible with the waterworks standard is "075".
- For those compatible with the waterworks standard, size 32 mm and 65 mm are not available.

MANUAL

GATE VALVE STANDARD TYPE (TYPE P) INSIDE SCREW CAP TYPE

TYPE—VCGC
CONNECTION / FLANGED—JIS, DIN, ANSI THREADED—Rc, Rp, NPT



■ JIS, DIN (Unit: mm)

mm	d	d'	D ₂	ℓ ₁	H	H ₁	H ₂	H ₃	JIS																			
									FLANGED								THREADED											
									JIS 10K				WATERWORKS				D ₁				d ₂							
32	40	30	120	49	268	50	107	161	135	100	4	19	—	—	165	22	—	—	—	—	—	—	—	—	90	Rc 1 1/4	22	115
40	40	—	120	49	268	50	107	161	140	105	4	19	—	—	165	22	—	—	—	—	—	—	—	—	90	Rc 1 1/2	25	115
50	50	—	130	60	299	58	134	165	155	120	4	19	—	—	180	23	—	—	—	—	—	—	—	—	102	Rc 2	28	130
65	65	—	155	75	321	68	152	169	175	140	4	19	—	—	190	24	—	—	—	—	—	—	—	—	—	—	—	—
75(80)	75	—	170	85	357	77	170	187	185	150	8	19	—	—	200	25	—	—	—	—	—	—	—	—	—	—	—	—
100	100	—	195	110	396	89	207	189	210	175	8	19	—	—	230	27	—	—	—	—	—	—	—	—	—	—	—	—
125	125	110	235	117	427	89	227	200	250	210	8	23	—	—	260	27	—	—	—	—	—	—	—	—	—	—	—	—
150	150	130	270	138	466	102	263	203	280	240	8	23	—	—	270	28	—	—	—	—	—	—	—	—	—	—	—	—
200	196	168	310	180	555	143	240	315	330	290	10	23	2	M20	290	28	—	—	—	—	—	—	—	—	—	—	—	—
250	247	210	360	226	675	175	270	405	400	355	12	25	—	—	380	30	—	—	—	—	—	—	—	—	—	—	—	—
300	298	255	410	273	772	195	320	452	445	400	14	25	2	M22	400	31	—	—	—	—	—	—	—	—	—	—	—	—
350	348	297	440	319	875	230	310	565	490	445	12	25	4	M22	430	32	—	—	—	—	—	—	—	—	—	—	—	—

mm	DIN											
	FLANGED					THREADED						
	DIN PN10											
	D	C	n	h	n ₁	M	L	t	D ₁	d ₂	ℓ	L
32	—	—	—	—	—	—	—	—	—	—	—	—
40	150	110	4	18	—	—	165	22	90	Rp 1 1/2	25	115
50	165	125	4	18	—	—	180	23	90	Rp 2	28	130
65	185	145	4	18	—	—	210	24	—	—	—	—
75(80)	200	160	8	18	—	—	240	25	—	—	—	—
100	220	180	8	18	—	—	250	27	—	—	—	—
125	250	210	8	18	—	—	260	27	—	—	—	—
150	285	240	8	22	—	—	280	27	—	—	—	—
200	340	295	6	22	2	M20	300	28	—	—	—	—
250	395	350	12	22	—	—	380	30	—	—	—	—
300	445	400	10	22	2	—	400	31	—	—	—	—
350	505	460	12	22	4	—	430	32	—	—	—	—

■ ANSI (Unit: inch)

inch	mm	d	d'	D ₂	ℓ ₁	H	H ₁	H ₂	H ₃	ANSI										
										FLANGED					THREADED					
										ANSI CLASS150										
	D	C	n	h	n ₁	M	L	t	d ₂	ℓ	L									
1 1/2	40	1.57	—	4.72	1.93	10.55	1.97	4.21	6.34	5.00	3.88	4	0.62	—	—	6.50	0.87	1 1/2-11 1/2 NPT	0.98	4.53
2	50	1.97	—	5.12	2.36	11.77	2.28	5.28	6.50	6.00	4.75	4	0.75	—	—	7.00	0.91	2-11 1/2 NPT	1.10	5.12
2 1/2	65	2.56	—	6.10	2.95	12.64	2.68	5.98	6.65	7.00	5.50	4	0.75	—	—	7.50	0.94	—	—	—
3	75(80)	2.95	—	6.69	3.35	14.06	3.03	6.69	7.36	7.00	6.00	4	0.75	—	—	8.00	0.98	—	—	—
4	100	3.94	—	7.68	4.33	15.59	3.50	8.15	7.44	9.00	7.50	8	0.75	—	—	9.00	1.06	—	—	—
5	125	4.92	4.33	9.25	4.61	16.81	3.50	8.94	7.87	10.00	8.50	8	0.88	—	—	10.24	1.06	—	—	—
6	150	5.91	5.12	10.63	5.43	18.35	4.02	10.35	7.99	11.00	9.50	8	0.88	—	—	10.50	1.06	—	—	—
8	200	7.72	6.61	12.20	7.09	21.85	5.63	9.45	12.40	13.50	11.75	6	0.88	2	W 3/4	11.50	1.30	—	—	—
10	250	9.72	8.27	14.17	8.90	26.57	6.89	10.63	15.94	16.00	14.25	12	1.00	—	—	14.96	1.18	—	—	—
12	300	11.73	10.04	16.14	10.75	30.39	7.68	12.60	17.80	19.00	17.00	10	1.00	2	W 7/8	15.75	1.22	—	—	—
14	350	13.70	11.69	17.32	12.56	34.45	9.06	12.20	22.24	21.00	18.75	8	1.12	4	W 1	16.93	1.26	—	—	—

GATE VALVE STANDARD TYPE (TYPE P) INSIDE SCREW ROUND HANDLE TYPE

- EQUIPPED WITH OPENING INDICATOR UNDER THE HANDLE TO ALLOW FOR EASY CHECK OF OPENING DEGREE OF THE VALVE.
- FOR ALL THE WETTED PARTS, CORROSION-RESISTANT MATERIAL IS USED.
- MADE OF ROBUST, LIGHTWEIGHT AND IMPACT-RESISTANT HARD VINYL CHLORIDE (HI-PVC), WITH A WEIGHT OF 1/3 TO 1/5 COMPARED TO METAL VALVES.

NOTES (1) For the round handle type, directly hold the round handle when opening or closing the valve. If a turning bar or similar tool is used to open or close the valve, the handle will be broken.
 (2) Concerning the flanged type compatible with the waterworks and JIS10K standards, the products of sizes of 40 to 150 mm are registered as valves certified by the Quality Certification Center, Japan Water Works Association.

BASIC SPECIFICATIONS

VALVE TYPE ————— **GATE VALVE STANDARD TYPE (TYPE P)
INSIDE SCREW ROUND HANDLE TYPE**

SIZE ————— **32 mm—350 mm (1 1/4 inch—14 inch)**

BODY MATERIAL ————— **HI-PVC**

SEAL MATERIAL / O-RING — **EPDM** etc.

CONNECTION / FLANGED — **JIS5K, JIS10K, DIN, ANSI**

THREADED — **Rc, Rp, NPT**

	FLUID TEMPERATURE	MAXIMUM WORKING PRESSURE (NORMAL TEMPERATURE) MPa(kgf/cm ²)			CONNECTION METHOD	
		32mm—200mm	250mm	300 mm—350 mm	FLANGED	THREADED
HI-PVC	-10°C~50°C	1.0 {10.2}	0.75 {7.7}	0.5 {5.1}	○	○

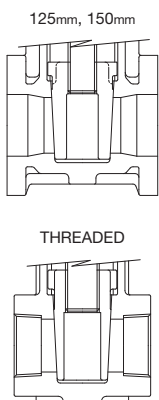
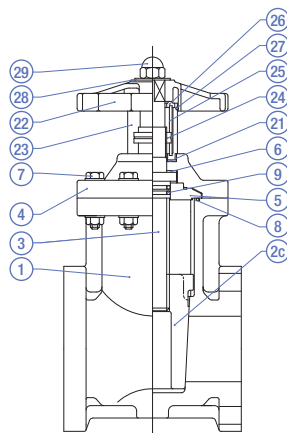
NOTES The maximum working pressure is the value including the water hammer pressure. Be careful that the maximum working pressure is not exceeded during use.
 * Concerning the allowable pressure for each temperature and material, see the technical documents at the end of this catalog.

MANUAL

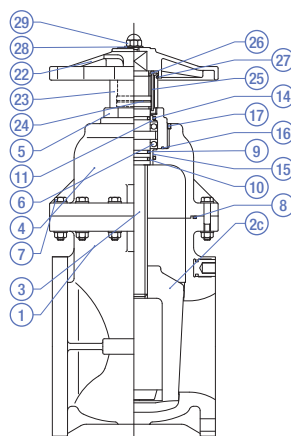


PARTS LIST **MANUAL**

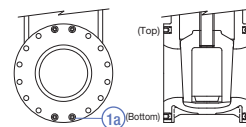
32 mm – 150mm (1 1/4 inch – 6 inch) <Stem: U-PVC>



200 mm – 350 mm (8 inch – 14 inch) <Stem: U-PVC>



DETAIL OF EMBEDDED BODY FITTING



PART NO. / NAME	QTY	MATERIAL	PART NO. / NAME	QTY	MATERIAL	PART NO. / NAME	QTY	MATERIAL
1 BODY	1	HI-PVC	8 O-RING (B)	1	EPDM, etc.	22 HANDLE	1	PP
1a EMBEDDED BODY FITTING (1)	—	C3604	9 O-RING (C)(3)	2-3	EPDM, etc.	23 OPENING COVER	1	PC
2c GATE (BODY) (A)	1	PP	10 BUSH (A)(1)	1	PP	24 OPENING RING	1	U-PVC
3 STEM	1	U-PVC	11 BUSH (B)(1)	1	PP	25 GUIDE PIN	1	SUS304
4 BONNET (LID) (A)	1	HI-PVC	14 O-RING (E)(1)	1	EPDM, etc.	26 GUIDE PIN SUPPORT PLATE	1	U-PVC
5 BONNET (LID) (B)	1	HI-PVC	15 O-RING (F)(1)	1	EPDM, etc.	27 O-RING (G)	1	EPDM
6 THRUST RING 2)	1 SET	PP	16 O-RING (D)(1)	1	EPDM, etc.	28 WASHER	1	U-PVC
6a THRUST BEARING(1)	1 SET	SUJ2	17 SET SCREW (A)(1)	1	SUS304	29 UNION NUT	1	SUS304
7 BOLT/NUT	—	SUS304	21 PACKING	1	EPDM			

NOTES (1) is used for sizes of 200 mm or more (2) is used for sizes of 150 mm or less. (3) The quantity of use is 2 pieces for 150 mm or less and 3 pieces for 200 mm or more.
 * The parts list above is applicable when the stem is made of U-PVC.

GATE VALVE SOFT SEAL TYPE (TYPE S) TYPE 66

- COMPATIBLE WITH THE JAPAN WATER WORKS ASSOCIATION STANDARD (JWWA B125 SYNTHETIC RESIN SOFT SEAL SLUICE VALVE), THE VALVE CAN BE SAFELY USED FOR WATER DISTRIBUTION/SUPPLY. (SIZE: 50 mm, 75 mm, 100 mm, 150 mm)
- EQUIPPED WITH OVER-TIGHTENING PREVENTION MECHANISM TO PREVENT ACCIDENTS DUE TO EXCESSIVE TIGHTENING.
- THE CHANNEL SURFACE FREE FROM IRREGULARITIES ALLOWS FOR SMOOTH FLOW. THE RUBBER SOFT SEAL ENSURES EXCELLENT WATER TIGHTNESS.
- COMPACT DESIGN ALLOWS FOR SHALLOW DEPTH MOUNTING.

BASIC SPECIFICATIONS

VALVE TYPE ————— GATE VALVE SOFT SEAL TYPE (TYPE S)
SOFT SEAL VALVE TYPE 66

SIZE ————— 32 mm—150 mm (1 1/4 inch—6 inch)

BODY MATERIAL ————— HI-PVC

SEAL MATERIAL / SEAT ————— SBR NBR

O-RING ————— EPDM

CONNECTION / FLANGED — JIS10K, DIN, ANSI

THREADED — Rc, Rp, NPT

	FLUID TEMPERATURE	MAXIMUM WORKING PRESSURE (NORMAL TEMPERATURE) MPa(kgf/cm ²)	CONNECTION METHOD	
			FLANGED	THREADED
HI-PVC	-10°C ~ 50°C	1.0 (10.2)	○	○

NOTES (1) The products of a size of 40 mm are registered as valves certified by the Quality Certification Center, Japan Water Works Association. (2) The maximum working pressure is the value including the water hammer pressure. Be careful that the maximum working pressure is not exceeded during use. (3) 32 mm type is processed from 40 mm.

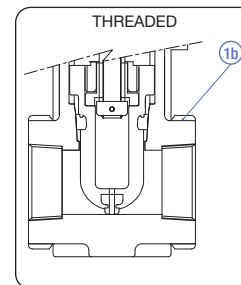
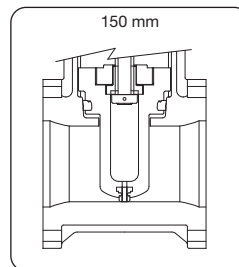
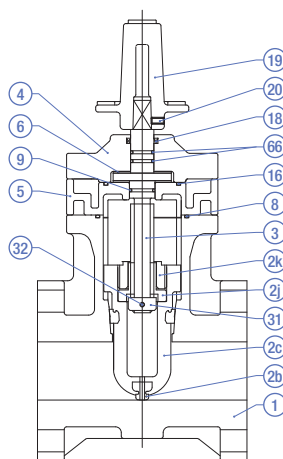
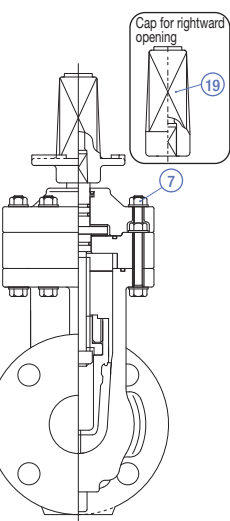
* Concerning the allowable pressure for each temperature and material, see the technical documents at the end of this catalog.



MANUAL



PARTS LIST



PART NO. / NAME	QTY	MATERIAL	PART NO. / NAME	QTY	MATERIAL	PART NO. / NAME	QTY	MATERIAL
① BODY	1	HI-PVC	④ BONNET (LID) (A)	1	HI-PVC	⑱ DUST SEAL	1	EPDM
①b RING	1 SET	STPG	⑤ BONNET (LID) (B)	1	HI-PVC	⑲ CAP (A)	1	FCD450
②b SEAT	1	SBR, NBR	⑥ THRUST RING	1 SET	PP	⑳ SET SCREW (B)	1	SUS304
②c GATE (BODY) (A)	1	U-PVC, HI-PVC	⑦ BOLT/NUT (A)	—	SUS304	㉑ STOPPER	1	SUS304
③ INTERNAL THREAD DEFLECTOR	1	C3604	⑧ O-RING (B)	1	SBR, NBR	㉒ PIN (A)	1	SUS304
④ DEFLECTOR RETAINER	1	HI-PVC	⑨ O-RING (C)	1	SBR, NBR	㉓ O-RING (H)	1 SET	EPDM
⑤ STEM	1	SUS304	⑱ O-RING (D)	1	EPDM			

NOTES For 30 mm and 40 mm, the cap (A) is coated with epoxy powder (white).

PRODUCT MODEL CODE LIST

MANUAL

ACTUATION	TYPE	OPERATING SYSTEM	STEM MATERIAL / OPEN DIRECTION	BODY MATERIAL	SEAL MATERIAL	CONNECTION / STANDARD	SIZE
V	S6	C	*	I	S	*	***
⋮	⋮	⋮	⋮	⋮	⋮	⋮	⋮
V MANUAL VALVE	S6 TYPE 66	C TOP CAP	R SUS, RIGHT L SUS, LEFT	I HI-PVC	S SBR	F1 FLANGED, 10K FD FLANGED, DIN FA FLANGED, ANSI NJ THREADED, JIS ND THREADED, DIN NA THREADED, ANSI	032 32mm ? 150 150mm

NOTES

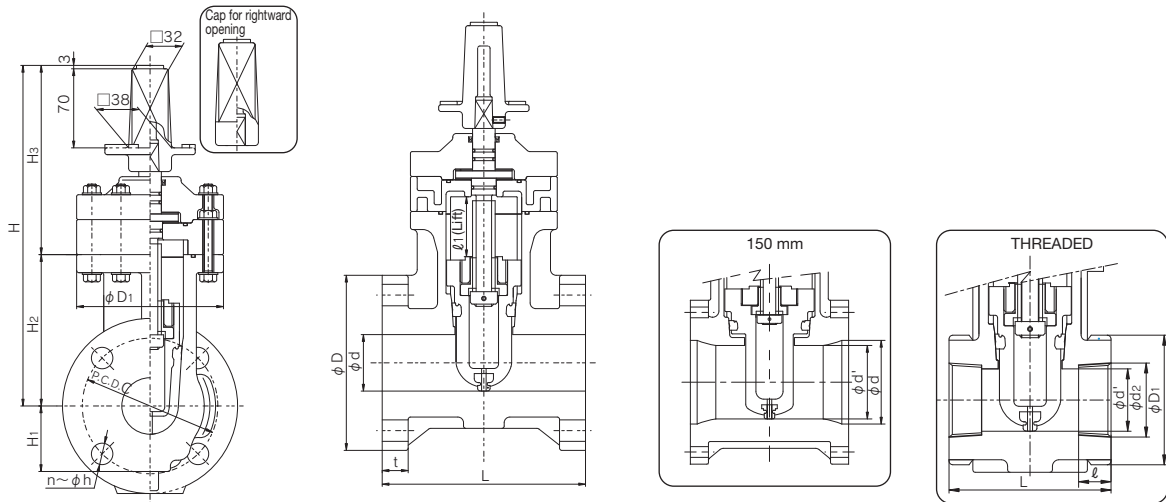
- Tapping type is the standard for all the cases.
- For those compatible with the waterworks standard, size 32 mm, 65 mm and 125 mm are not available.
- The product model code of size 80 mm compatible with the waterworks standard is "075".

MANUAL

GATE VALVE SOFT SEAL TYPE (TYPE S) SOFT SEAL VALVE TYPE 66

TYPE—VS6C

CONNECTION / FLANGED—JIS, DIN, ANSI THREADED—Rc, Rp, NPT



■ JIS, DIN (Unit: mm)

mm	d	d'	D1	LIFT ℓ	H	H1	H2	H3	JIS																
									FLANGED							THREADED									
									JIS 10K							WATERWORKS							D1	d2	ℓ
32	40	30	120	42	268	50	107	161	D	C	n	h	L	t	D	C	n	h	L	t	90	Rc 1 1/4	22	115	
40	40	—	120	42	268	50	107	161	140	105	4	19	165	22	—	—	—	—	—	—	—	90	Rc 1 1/2	25	115
50	50	—	130	53	300	58	134	166	155	120	4	19	180	23	—	—	—	—	—	—	—	102	Rc 2	28	130
75(80)	75	—	170	77	361	77	170	191	185	150	8	19	200	25	—	—	—	—	—	—	—	—	—	—	—
100	100	—	195	102	414	89	207	207	210	175	8	19	230	27	—	—	—	—	—	—	—	—	—	—	—
150	150	130	270	132	496.5	102	263	233.5	280	240	8	23	270	28	—	—	—	—	—	—	—	—	—	—	—

DIN

mm	FLANGED							THREADED				
	DIN PN10							D1	d2	ℓ	L	
	D	C	n	h	n1	M	L	t				
32	—	—	—	—	—	—	—	—	—	—	—	—
40	150	110	4	18	—	—	165	22	90	Rp 1 1/2	25	115
50	165	125	4	18	—	—	180	23	90	Rp 2	28	130
75(80)	200	160	8	18	—	—	240	25	—	—	—	—
100	220	180	8	18	—	—	250	27	—	—	—	—
150	285	240	8	22	—	—	280	27	—	—	—	—

■ ANSI (Unit: inch)

inch	mm	d	d'	D1	LIFT ℓ	H	H1	H2	H3	ANSI																					
										FLANGED							THREADED														
										ANSI Class150																					
1 1/2	40	1.57	1.18	4.72	1.65	10.55	1.97	4.21	6.34	D	C	n	h	n1	M	L	t	d2	ℓ	L	5.00	3.88	4	0.62	—	—	6.50	0.87	1 1/2-11 1/2NPT	0.98	4.53
2	50	1.57	—	4.72	1.65	10.55	1.97	4.21	6.34	6.00	4.75	4	0.75	—	—	7.00	0.91	2-11 1/2NPT	1.10	5.12	—	—	—	—	—	—	—	—	—	—	—
3	75(80)	1.97	—	5.12	2.09	11.81	2.28	5.28	6.54	7.00	6.00	4	0.75	—	—	8.00	0.98	—	—	—	—	—	—	—	—	—	—	—	—	—	—
4	100	2.95	—	6.69	3.03	14.21	3.03	6.69	7.52	9.00	7.50	8	0.75	—	—	9.00	1.06	—	—	—	—	—	—	—	—	—	—	—	—	—	—
6	150	3.94	—	7.68	4.02	16.30	3.50	8.15	8.15	11.00	9.50	8	0.88	—	—	10.50	1.06	—	—	—	—	—	—	—	—	—	—	—	—	—	—

GATE VALVE SOFT SEAL TYPE (TYPE S) INSIDE SCREW CAP TYPE

- COMPATIBLE WITH THE JAPAN WATER WORKS ASSOCIATION STANDARD (JWWA B125 SYNTHETIC RESIN SOFT SEAL SLUICE VALVE), THE VALVE CAN BE SAFELY USED FOR WATER DISTRIBUTION/SUPPLY. (SIZE: 125 mm)
- THE CHANNEL SURFACE FREE FROM IRREGULARITIES ALLOWS FOR SMOOTH FLOW. THE RUBBER SOFT SEAL ENSURES EXCELLENT WATER TIGHTNESS.
- COMPACT DESIGN ALLOWS FOR SHALLOW DEPTH MOUNTING.

BASIC SPECIFICATIONS

VALVE TYPE ————— GATE VALVE SOFT SEAL TYPE (TYPE S)
INSIDE SCREW CAP TYPE

SIZE ————— 65 mm, 125 mm, 200 mm
(2 1/2 inch, 5 inch, 8 inch)

BODY MATERIAL ————— HI-PVC

SEAL MATERIAL / SEAT ————— SBR NBR

O-RING ————— EPDM

CONNECTION / FLANGED — JIS10K, DIN, ANSI

	FLUID TEMPERATURE	MAXIMUM WORKING PRESSURE (NORMAL TEMPERATURE) MPa(kgf/cm ²)	CONNECTION METHOD
HI-PVC	-10°C ~ 50°C	1.0 {10.2}	FLANGED

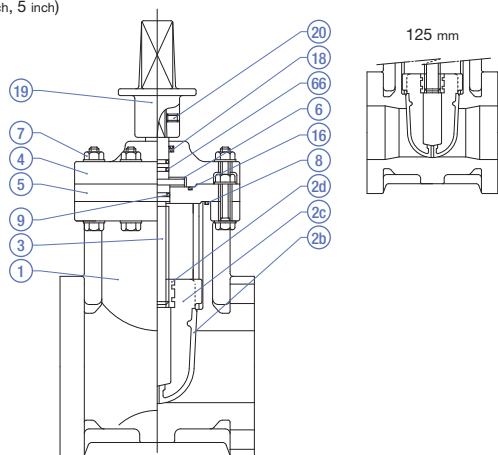
NOTES The maximum working pressure is the value including the water hammer pressure. Be careful that the maximum working pressure is not exceeded during use.
* Concerning the allowable pressure for each temperature and material, see the technical documents at the end of this catalog.

MANUAL

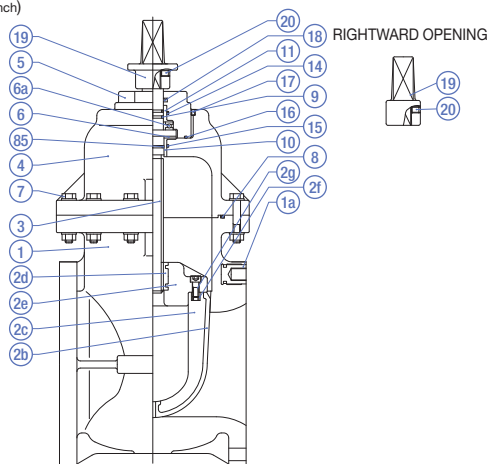


PARTS LIST MANUAL

65 mm, 125 mm
(2 1/2 inch, 5 inch)



200 mm
(8 inch)



PART NO. / NAME	QTY	MATERIAL	PART NO. / NAME	QTY	MATERIAL	PART NO. / NAME	QTY	MATERIAL
① BODY	1	HI-PVC	④ BONNET (LID) (A)	1	HI-PVC	⑩ O-RING (D)	1	EPDM, SBR4, NBR
①a EMBEDDED BODY FITTING (1)	4	C3604	⑤ BONNET (LID) (B)	1	HI-PVC	⑪ BUSH (A)(2)	1	PP
②b SEAT	1	SBR, NBR	⑥ THRUST RING(5)	1 set / 1	PP	⑫ BUSH (B)(2)	1	PP
②c GATE (BODY) (A)	1	C-PVC	⑥a THRUST BEARING (2)	1	SUU2	⑬ SCREW	1	SUS304
②d GATE (BODY) EMBEDDED FITTING (A)	1	BC6	⑦ BOLT/NUT	—	SUS304	⑭ DUST SEAL	1	EPDM
②e GATE (BODY) (B)(2)	1	PP	⑧ O-RING (B)	1	EPDM, SBR4, NBR	⑮ CAP (A)	1	FC200 (EPOXY POWDER COATING)
②f GATE (BODY) EMBEDDED FITTING (B)	4	C3604	⑨ O-RING (C)(3)	1-2	EPDM, SBR4, NBR	⑯ SET SCREW (B)	1	SUS304
③ BOLT (A) (2)	4	SUS304	⑭ O-RING (E)(2)	2	EPDM, SBR4, NBR	⑰ O-RING (H)	2	EPDM
③ STEM	1	SUS304	⑮ O-RING (F)(2)	1	EPDM, SBR4, NBR	⑱ O-RING (I)(2)	1	EPDM, SBR4, NBR

NOTES (1) is used only for 10K 200 mm. (2) is used only for 200 mm. (3) The quantity of use is 1 piece for 65 mm and 125 mm and 2 pieces for 200 mm. (4) Only 200 mm is available.
(5) The quantity of use is 1 set (2 pieces) for 65 mm and 125 mm and 1 piece for 200 mm.
* For 65 mm and 200 mm, the cap (A) is coated with epoxy powder (white).

PRODUCT MODEL CODE LIST
[MANUAL](#)

ACTUATION	TYPE	OPERATING SYSTEM	STEM MATERIAL / OPEN DIRECTION	BODY MATERIAL	SEAL MATERIAL	CONNECTION / STANDARD	SIZE
V	SG	C	*	I	S	*	***
V MANUAL VALVE	SG CONVENTIONAL TYPE	C TOP CAP	R SUS, RIGHT L SUS, LEFT	I HI-PVC	S SBR	F1 FLANGED, 10K FW — FD FLANGED, DIN FA FLANGED, ANSI	065 65mm 125 125mm 200 200mm

NOTES

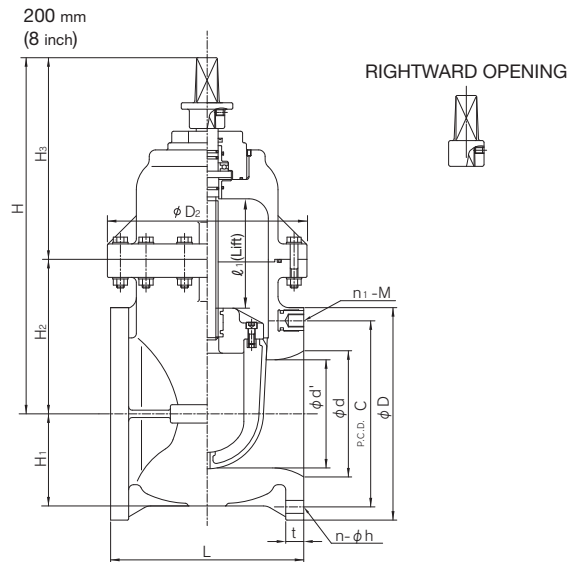
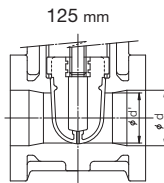
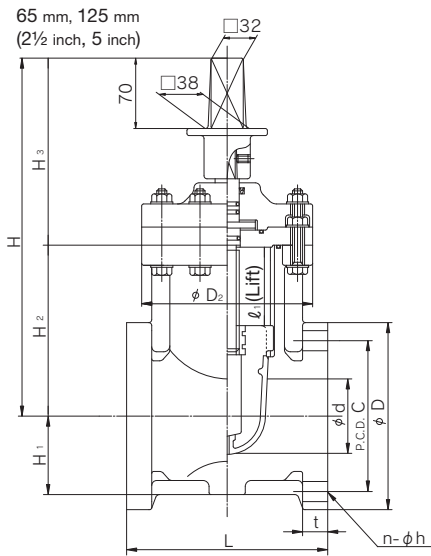
- Tapping type is the standard for all the cases.
- The price above is the set price for the valve, full-face gaskets (2 pcs), and SUS plain washer.
- For those compatible with the waterworks standard, size 65 mm is not available.

MANUAL

GATE VALVE SOFT SEAL TYPE (TYPE S) INSIDE SCREW CAP TYPE

TYPE—VSGC

CONNECTION / FLANGED—JIS, DIN, ANSI



■ JIS, DIN (Unit: mm)

mm	d	d'	D ₂	ℓ ₁	H ₁	H ₂	H ₃	H	JIS													
									FLANGED							WATERWORKS						
									D	C	n	h	n ₁	M	L	t	D	C	n	h	L	t
65	65	—	155	67	68	152	169	321	175	140	4	19	—	—	190	24	—	—	—	—	—	—
125	125	110	235	112	89	227	200	427	250	210	8	23	—	—	260	27	—	—	—	—	—	—
200	196	168	310	175	143	240	315	555	330	290	10	23	2	M20	290	28	—	—	—	—	—	—

mm	DIN								
	FLANGED DIN PN10					THREADED			
	D	C	n	h	n ₁	M	L	t	D ₁
65	185	145	4	18	—	—	210	24	—
125	250	210	8	18	—	—	260	27	—
200	340	295	6	22	2	M20	300	28	—

■ ANSI (Unit: inch)

inch	mm	d	d'	D ₂	ℓ ₁	H ₁	H ₂	H ₃	H	ANSI										
										FLANGED							THREADED			
										ANSI Class150							d ₂	ℓ	L	
2 1/2	65	2.56	—	6.10	2.64	2.68	5.98	6.65	12.64	7.00	5.50	4	0.75	—	—	7.50	0.94	—	—	—
5	125	4.92	4.33	9.25	4.41	3.50	8.94	7.87	16.81	10.00	8.50	8	0.88	—	—	10.24	1.06	—	—	—
8	200	7.72	6.61	12.20	6.89	5.63	9.45	12.40	21.85	13.50	11.75	6	0.88	2	W 3/4	11.50	1.30	—	—	—

GATE VALVE SOFT SEAL TYPE (TYPE S) INSIDE SCREW ROUND HANDLE TYPE

- EQUIPPED WITH OPENING INDICATOR UNDER THE HANDLE TO ALLOW FOR EASY CHECK OF OPENING DEGREE OF THE VALVE.
- FOR ALL THE WETTED PARTS, CORROSION-RESISTANT MATERIAL IS USED.
- THE CHANNEL SURFACE FREE FROM IRREGULARITIES ALLOWS FOR SMOOTH FLOW. THE RUBBER SOFT SEAL ENSURES EXCELLENT WATER TIGHTNESS.
- MADE OF ROBUST, LIGHTWEIGHT AND IMPACT-RESISTANT HARD VINYL CHLORIDE (HI-PVC), WITH A WEIGHT OF 1/3 TO 1/5 COMPARED TO METAL VALVES.

NOTES For the round handle type, directly hold the round handle when opening or closing the valve. If a turning bar or similar tool is used to open or close the valve, the handle will be broken.

BASIC SPECIFICATIONS

VALVE TYPE ————— **GATE VALVE SOFT SEAL TYPE (TYPE S)
INSIDE SCREW ROUND HANDLE TYPE**

SIZE ————— **50 mm—200 mm (2 inch—8 inch)**

BODY MATERIAL ————— **HI-PVC**

SEAL MATERIAL / SEAT ————— **SBR NBR**

O-RING ————— **EPDM**

CONNECTION / FLANGED ————— **JIS10K, DIN, ANSI**

	FLUID TEMPERATURE	MAXIMUM WORKING PRESSURE (NORMAL TEMPERATURE) MPa(kg/cm ²)	CONNECTION METHOD FLANGED
HI-PVC	-10°C ~ 50°C	1.0 {10.2}	○

NOTES The maximum working pressure is the value including the water hammer pressure. Be careful that the maximum working pressure is not exceeded during use.

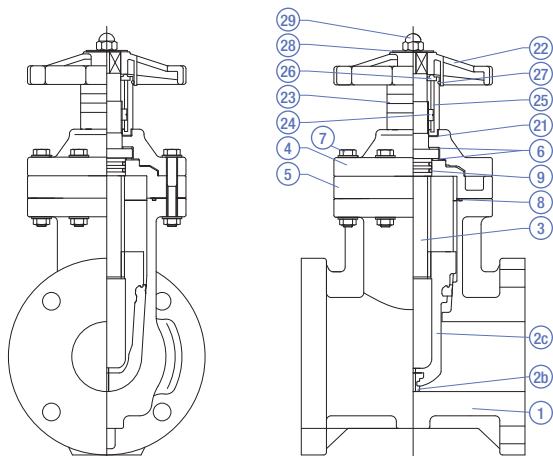
* Concerning the allowable pressure for each temperature and material, see the technical documents at the end of this catalog.

MANUAL

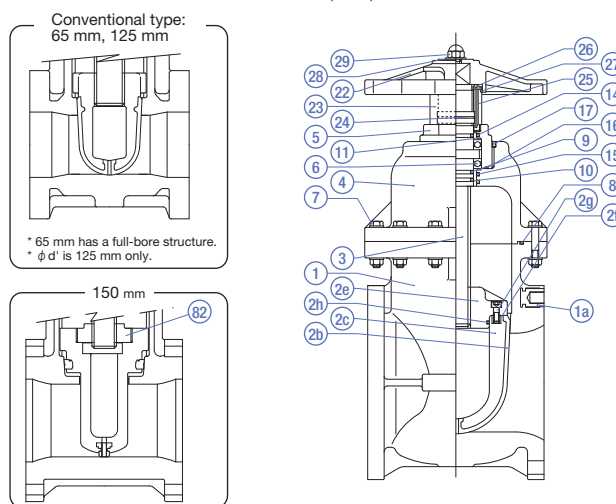


PARTS LIST **MANUAL**

50 mm – 150 mm (2 inch – 6 inch) <Stem: U-PVC>



200 mm (8 inch) <Stem: U-PVC>



PART NO. / NAME	QTY	MATERIAL	PART NO. / NAME	QTY	MATERIAL	PART NO. / NAME	QTY	MATERIAL
1 BODY	1	HI-PVC	68 THRUST RING (2)	1 SET	SUJ2	21 PACKING	1	EPDM
1a EMBEDDED BODY FITTING (1)	4	C3604	7 BOLT/NUT	—	SUS304	22 HANDLE	1	PP
2 SEAT	1	SBR, NBR	7h O-RING (A) (2)	1	EPDM, NBR	23 OPENING COVER	1	PC
2c GATE (BODY) (A)	1	HI-PVC, C-PVC	8 O-RING (B)	1	EPDM, NBR	24 OPENING RING	1	U-PVC
26 GATE (BODY) (B) (2)	1	PP	9 O-RING (C) (3)	2-3	EPDM, NBR	25 GUIDE PIN	1	SUS304
27 GATE (BODY) EMBEDDED FITTING (B) (2)	4	C3604	15 O-RING (F) (2)	1	EPDM, NBR	26 GUIDE PIN SUPPORT PLATE	1	U-PVC
29 BOLT (A) (2)	4	SUS304	16 O-RING (D) (2)	1	EPDM, NBR	27 O-RING (G)	1	EPDM
3 STEM	1	U-PVC	10 BUSH (A) (2)	1	PP	28 WASHER	1	U-PVC
4 BONNET (LID) (A)	1	HI-PVC	11 BUSH (B) (2)	1	PP	29 UNION NUT	1	SUS304
5 BONNET (LID) (B)	1	HI-PVC	17 SET SCREW (A) (2)	1	SUS304	82 SCREW HOLDER	1	U-PVC *For 150 mm.
6 THRUST RING (4)	2	PP						

NOTES (1) is used only for 10K 200 mm. (2) is used only for 200 mm. (3) The quantity of use is 3 pieces for 150 mm or less and 2 pieces for 200 mm. (4) is used for sizes of 150 mm or less. * The parts list above is applicable when the stem is made of U-PVC.

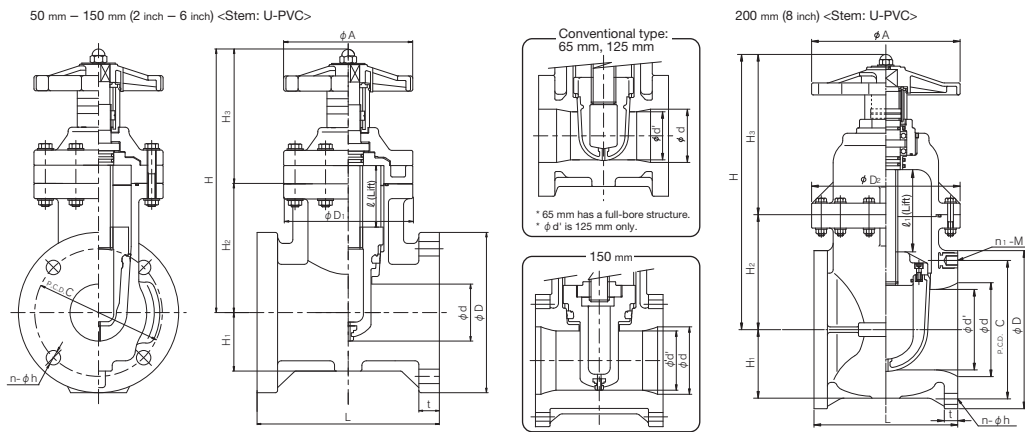
PRODUCT MODEL CODE LIST
MANUAL

ACTUATION	TYPE	OPERATING SYSTEM	STEM MATERIAL / OPEN DIRECTION	BODY MATERIAL	SEAL MATERIAL	CONNECTION / STANDARD	SIZE
V	**	M	*	I	S	**	***
V MANUAL VALVE	SG CONVENTIONAL TYPE TG T-SHAPED RUBBER	M ROUND HANDLE	J U-PVC, LEFT R SUS, RIGHT	I HI-PVC	S SBR	F1 FLANGED, 10K FD FLANGED, DIN FA FLANGED, ANSI	050 50mm ? 200 200mm

- NOTES**
- The type of size 65 mm, 125 mm and 200 mm is "conventional". The type of other sizes is "T-shaped rubber".
 - For the JIS10K SUS stem model, right open type is also available.
 - The price above is the set price for the valve, full-face gaskets (2 pcs), and SUS plain washer.
 - The product model code of size 80 mm compatible with the waterworks standard is "075".
 - For the round handle type, resin stems compatible with JIS5K are also available. (40 mm to 150 mm)
 - For those compatible with the waterworks standard, size 32 mm and 65 mm are not available.

MANUAL

GATE VALVE SOFT SEAL TYPE (TYPE S) INSIDE SCREW ROUND HANDLE TYPE
TYPE—VSGM, VTGM
CONNECTION / FLANGED—JIS, DIN, ANSI



■ JIS, DIN (Unit: mm)

mm	d	d'	D ₁	ℓ	H ₁	H ₂	STEM					JIS																								
							U-PVC		SUS		A	FLANGED						WATERWORKS																		
							H ₃	H	H ₃	H		D	C	n	h	m	M	L	t	D	C	n	h	L	t											
50	50	-	130	52	58	134	159	293	163	297	130	155	120	4	19	-	-	180	23	-	-	-	-	-	-	-	-	-	-	-	-	-	-	-	-	
65	65	-	155	67	68	152	150	302	154	306	155	175	140	4	19	-	-	190	24	-	-	-	-	-	-	-	-	-	-	-	-	-	-	-	-	
75(80)	75	-	170	77	77	170	180	350	191	361	170	185	150	8	19	-	-	200	25	-	-	-	-	-	-	-	-	-	-	-	-	-	-	-	-	-
100	100	-	195	102	89	207	203	410	214	421	195	210	175	8	19	-	-	230	27	-	-	-	-	-	-	-	-	-	-	-	-	-	-	-	-	-
125	125	110	235	112	89	227	180	407	190	417	230	250	210	8	23	-	-	260	27	-	-	-	-	-	-	-	-	-	-	-	-	-	-	-	-	-
150	148	130	270	132	117	263	224	487	234	497	270	280	240	8	23	-	-	270	28	-	-	-	-	-	-	-	-	-	-	-	-	-	-	-	-	-
200	196	168	310	175	143	240	337	577	337	577	310	330	290	10	23	2	M20	290	28	-	-	-	-	-	-	-	-	-	-	-	-	-	-	-	-	-

mm	DIN								
	FLANGED								
	DIN PN10								
	D	C	n	h	n ₁	M	L	t	
50	165	125	4	18	-	-	180	23	
65	185	145	4	18	-	-	210	24	
75(80)	200	160	8	18	-	-	240	25	
100	220	180	8	18	-	-	250	27	
125	250	210	8	18	-	-	260	27	
150	285	240	8	22	-	-	280	27	
200	340	295	6	22	2	M20	300	28	

■ ANSI (Unit: inch)

inch	mm	d	d'	D ₁	ℓ	H ₁	H ₂	STEM					ANSI																								
								U-PVC		SUS		A	FLANGED						ANSI Class150																		
								H ₃	H	H ₃	H		D	C	n	h	n ₁	M	L	t	D	C	n	h	L	t											
2	50	1.97	-	5.12	2.05	2.28	5.28	6.26	11.54	6.42	11.69	5.12	6.00	4.75	4	0.75	-	-	7.00	0.91	-	-	-	-	-	-	-	-	-	-	-	-	-	-	-	-	-
2 1/2	65	2.56	-	6.10	2.64	2.68	5.98	5.91	11.89	6.06	12.05	6.10	7.00	5.50	4	0.75	-	-	7.50	0.94	-	-	-	-	-	-	-	-	-	-	-	-	-	-	-	-	-
3	75(80)	2.95	-	6.69	3.03	3.03	6.69	7.09	13.78	7.52	14.21	6.69	7.00	6.00	4	0.75	-	-	8.00	0.98	-	-	-	-	-	-	-	-	-	-	-	-	-	-	-	-	-
4	100	3.94	-	7.68	4.02	3.50	8.15	7.99	16.14	8.43	16.57	7.68	9.00	7.50	8	0.75	-	-	9.00	1.06	-	-	-	-	-	-	-	-	-	-	-	-	-	-	-	-	-
5	125	4.92	4.33	9.25	4.41	3.50	8.94	7.09	16.02	7.48	16.42	9.06	10.00	8.50	8	0.88	-	-	10.24	1.06	-	-	-	-	-	-	-	-	-	-	-	-	-	-	-	-	-
6	150	5.83	5.12	10.63	5.20	4.61	10.35	8.82	19.17	9.21	19.57	10.63	11.00	9.50	8	0.88	-	-	10.50	1.06	-	-	-	-	-	-	-	-	-	-	-	-	-	-	-	-	-
8	200	7.72	6.61	12.20	6.89	5.63	9.45	13.27	22.72	13.27	22.72	12.20	13.50	11.75	6	0.88	2	W 3/4	11.50	1.30	-	-	-	-	-	-	-	-	-	-	-	-	-	-	-	-	

GATE VALVE SOFT SEAL TYPE (TYPE S) OUTSIDE SCREW ROUND HANDLE TYPE

- MADE OF ROBUST, LIGHTWEIGHT AND IMPACT-RESISTANT HARD VINYL CHLORIDE (HI-PVC).
- THE CHANNEL SURFACE FREE FROM IRREGULARITIES ALLOWS FOR SMOOTH FLOW. THE RUBBER SOFT SEAL ENSURES EXCELLENT WATER TIGHTNESS.
- THE STEM SCREW IS NOT EXPOSED TO THE FLUID, NO FOREIGN OBJECT DOES NOT ENTER.

NOTES For the round handle type, directly hold the round handle when opening or closing the valve. If a turning bar or similar tool is used to open or close the valve, the handle will be broken.

BASIC SPECIFICATIONS

VALVE TYPE — GATE VALVE SOFT SEAL TYPE (TYPE S)
OUTSIDE SCREW ROUND HANDLE TYPE

SIZE — 32 mm—250 mm (1 1/4 inch—10 inch)

BODY MATERIAL — HI-PVC

SEAL MATERIAL / SEAT — SBR NBR

O-RING — EPDM

CONNECTION / FLANGED — JIS10K, DIN, ANSI

	FLUID TEMPERATURE	MAXIMUM WORKING PRESSURE IN NORMAL TEMPERATURE (MPa(kgf/cm ²))	CONNECTION METHOD
HI-PVC	-10°C ~ 50°C	1.0 {10.2} 0.75 {7.7}	FLANGED ○

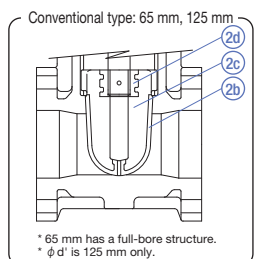
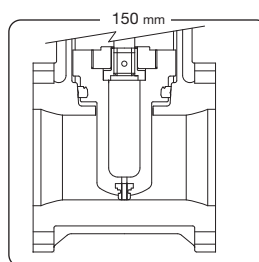
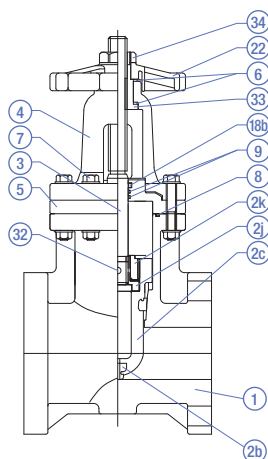
NOTES The maximum working pressure is the value including the water hammer pressure. Be careful that the maximum working pressure is not exceeded during use.
* Concerning the allowable pressure for each temperature and material, see the technical documents at the end of this catalog.

MANUAL

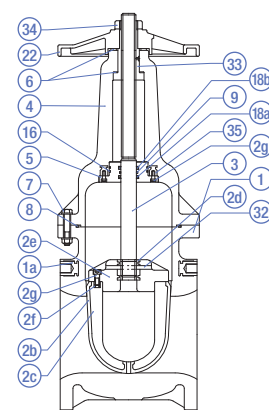
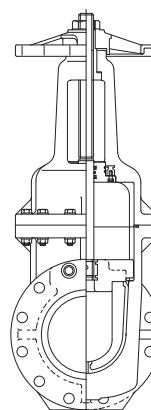


PARTS LIST MANUAL

32 mm – 150 mm (1 1/4 inch – 6 inch)



200 mm – 250 mm (8 inch – 10 inch)



PART NO. / NAME	QTY	MATERIAL	PART NO. / NAME	QTY	MATERIAL	PART NO. / NAME	QTY	MATERIAL
1 BODY	1	HI-PVC	2k DEFLECTOR RETAINER ⁽²⁾	1	HI-PVC	18a DUST SEAL (A)	1	EPDM, NBR
1a EMBEDDED BODY FITTING ⁽¹⁾	4	C3604	3 STEM	1	SUS304	18b DUST SEAL (B)	1	NBR
2b SEAT	1	SBR, NBR	4 BONNET (LID) (A)	1	HI-PVC	22 HANDLE	1	PP
2c GATE (BODY) (A)	1	HI-PVC, C-PVC	5 BONNET (LID) (B)	1	HI-PVC, PP	32 PIN (A)	1	SUS304
2d GATE (BODY) EMBEDDED FITTING (A)	1	BC6	6 THRUST RING (A)	2	PP	33 SLEEVE	1	C3604, BC6
2e GATE (BODY) (B) ⁽¹⁾	1	HI-PVC	7 BOLT/NUT	—	SUS304	34 NUT	1	C3604, BC6
2f GATE (BODY) EMBEDDED FITTING (B) ⁽¹⁾	4	C3604	8 O-RING (B)	1	EPDM, NBR	35 EMBEDDED LID FITTING ⁽¹⁾	4	C3604
2g BOLT (A) ⁽¹⁾	4	SUS304	9 O-RING (C)	2-1	EPDM, NBR			
2h INTERNAL THREAD DEFLECTOR ⁽²⁾	4	BC6	16 O-RING (D) ⁽¹⁾	2	EPDM, NBR			

NOTES (1) is used only for 200 mm and 250 mm. (2) is used for sizes other than 65 mm, 125 mm, 200 mm and 250 mm.

PRODUCT MODEL CODE LIST

MANUAL

ACTUATION	TYPE	OPERATING SYSTEM	STEM MATERIAL / OPEN DIRECTION	BODY MATERIAL	SEAL MATERIAL	CONNECTION / STANDARD	SIZE
V	**	M	L	I	S	F1	***
V MANUAL VALVE	SR CONVENTIONAL TYPE TR T-SHAPED RUBBER	M ROUND HANDLE	L SUS, LEFT	I HI-PVC	S SBR	F1 FLANGED, 10K FD FLANGED, DIN FA FLANGED, ANSI	032 32mm ? 250mm

NOTES

- The type of size 65 mm, 125 mm, 200 mm and 250 mm is "conventional". The type of other sizes is "T-shaped rubber".
- The price above is the set price for the valve, full-face gaskets (2 pcs), and SUS plain washer.
- For the seal material NBR, contact us.

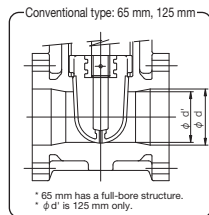
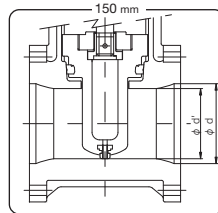
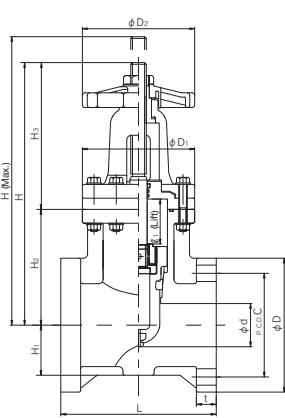
MANUAL

GATE VALVE SOFT SEAL TYPE (TYPE S) OUTSIDE SCREW ROUND HANDLE TYPE

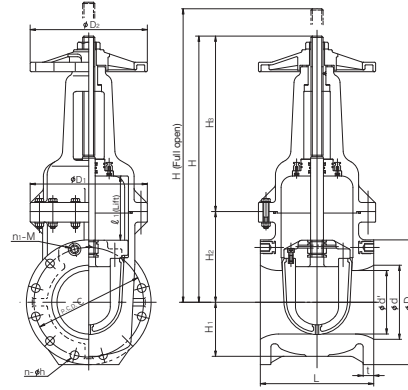
TYPE—VSRM, VTRM

CONNECTION / FLANGED—JIS, DIN, ANSI

32 mm – 150 mm (1 1/4 inch – 6 inch)



200 mm – 250 mm (8 inch – 10 inch)



■ JIS, DIN (Unit: mm)

mm	d	d'	D1	D2	ℓ1	H	(Max.) H	H1	H2	H3	JIS											
											FLANGED								JIS 10K			
											D	C	n	h	n1	M	L	t				
32	40	30	120	120	37	269	311	50	107	162	135	100	4	19	—	—	165	22				
40	40	—	120	120	42	264	306	50	107	157	140	105	4	19	—	—	165	22				
50	50	—	130	130	52	304	356	58	134	170	155	120	4	19	—	—	180	23				
65	65	—	155	155	67	340	407	68	152	188	175	140	4	19	—	—	190	24				
75(80)	75	—	170	170	77	398	476	77	170	228	185	150	8	19	—	—	200	25				
100	100	—	195	195	102	502	604	89	207	295	210	175	8	19	—	—	230	27				
125	125	110	235	235	112	481	593	89	227	254	250	210	8	23	—	—	260	27				
150	150	130	270	270	132	600	732	102	263	337	280	240	8	23	—	—	270	28				
200	196	168	310	310	175	702	877	143	240	462	330	290	10	23	2	M20	290	28				
250	247	210	360	360	219	856	1075	175	270	586	400	355	12	25	—	—	380	30				

mm	DIN							
	FLANGED							
	D	C	n	h	n1	M	L	t
32	—	—	—	—	—	—	—	—
40	150	110	4	18	—	—	165	22
50	165	125	4	18	—	—	180	23
65	185	145	4	18	—	—	210	24
75(80)	200	160	8	18	—	—	240	25
100	220	180	8	18	—	—	250	27
125	250	210	8	18	—	—	260	27
150	285	240	8	22	—	—	280	27
200	340	295	6	22	2	M20	300	28
250	395	350	12	22	—	—	380	30

■ ANSI (Unit: inch)

inch	mm	d	d'	D1	D2	ℓ1	H	(Max.) H	H1	H2	H3	ANSI											
												FLANGED								ANSI CLASS150			
												D	C	n	h	n1	M	L	t				
1 1/2	40	1.57	—	4.72	4.72	1.65	10.39	12.05	1.97	4.21	6.18	5.00	3.88	4	0.62	—	—	6.50	0.87				
2	50	1.97	—	5.12	5.12	2.05	11.97	14.02	2.28	5.28	6.69	6.00	4.75	4	0.75	—	—	7.00	0.91				
2 1/2	65	2.56	—	6.10	6.10	2.64	13.39	16.02	2.68	5.98	7.40	7.00	5.50	4	0.75	—	—	7.50	0.94				
3	75(80)	2.95	—	6.69	6.69	3.03	15.67	18.74	3.03	6.69	8.98	7.00	6.00	4	0.75	—	—	8.00	0.98				
4	100	3.94	—	7.68	7.68	4.02	19.76	23.78	3.50	8.15	11.61	9.00	7.50	8	0.75	—	—	9.00	1.06				
5	125	4.92	4.33	9.25	9.25	4.41	18.94	23.35	3.50	8.94	10.00	10.00	8.50	8	0.88	—	—	10.24	1.06				
6	150	5.91	5.12	10.63	10.63	5.20	23.62	28.82	4.02	10.35	13.27	11.00	9.50	8	0.88	—	—	10.50	1.06				
8	200	7.72	6.61	12.20	12.20	6.89	27.64	34.53	5.63	9.45	18.19	13.50	11.75	6	0.88	2	W 3/4	11.50	1.30				
10	250	9.72	8.27	14.17	14.17	8.62	33.70	42.32	6.89	10.63	23.07	16.00	14.25	12	1.00	—	—	14.96	1.18				

GATE VALVE OUTSIDE SCREW SECTION VALVE (FOR VACUUM SEWAGE)

- THE CHANNEL SURFACE FREE FROM IRREGULARITIES ALLOWS FOR SMOOTH FLOW. THE RUBBER SOFT SEAL ENSURES EXCELLENT WATER TIGHTNESS.
- THE STEM SCREW IS NOT EXPOSED TO THE FLUID, NO FOREIGN OBJECT DOES NOT ENTER.
- COMPACT DESIGN ALLOWS FOR SHALLOW DEPTH MOUNTING.

MANUAL

(Size 100 mm, 150 mm — Applicable to a burial depth of 600 mm.
 Size 200 mm — Applicable to a burial depth of 700 mm.
 Size 250 mm — Applicable to a burial depth of 800 mm.)

BASIC SPECIFICATIONS

VALVE TYPE — GATE VALVE OUTSIDE SCREW SECTION VALVE (FOR VACUUM SEWAGE)
SIZE — 100 mm, 150 mm, 200 mm, 250 mm (4 inch, 6 inch, 8 inch, 10 inch)
BODY MATERIAL — HI-PVC
SEAL MATERIAL / SEAT — SBR
O-RING — EPDM
CONNECTION / FLANGED — JIS10K

	FLUID TEMPERATURE	MAXIMUM WORKING PRESSURE (NORMAL TEMPERATURE) MPa(kgf/cm ²)		CONNECTION METHOD
		100mm-200mm	250mm	
HI-PVC	-10°C ~ 50°C	1.0 {10.2}	0.75 {7.7}	○

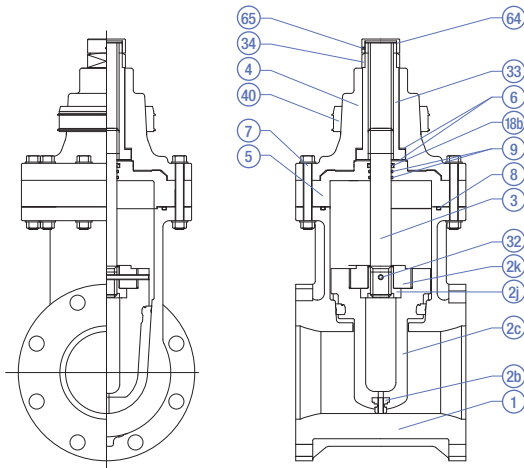
NOTES The maximum working pressure is the value including the water hammer pressure. Be careful that the maximum working pressure is not exceeded during use.
 * Concerning the allowable pressure for each temperature and material, see the technical documents at the end of this catalog.



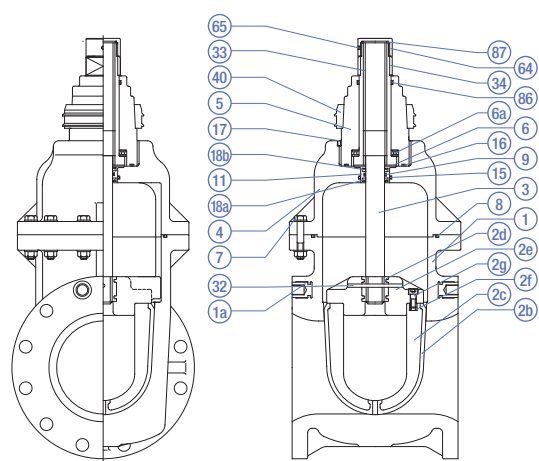
PRODUCT MODEL CODE LIST	ACTUATION	TYPE	OPERATING SYSTEM	STEM MATERIAL, OPERATING DIRECTION	BODY MATERIAL	SEAL MATERIAL	CONNECTION	SIZE
MANUAL	V	**	C	L	I	S	F1	***
	V MANUAL VALVE	TR T-STYLE(RUBBER) SR REGULAR	C TOP-CAP	L STAINLESS STEEL, LEFT	I HI-PVC	S SBR	F1 JIS10K	100 100mm 250 250mm

PARTS LIST **MANUAL**

100 mm – 150 mm (4 inch – 6 inch)



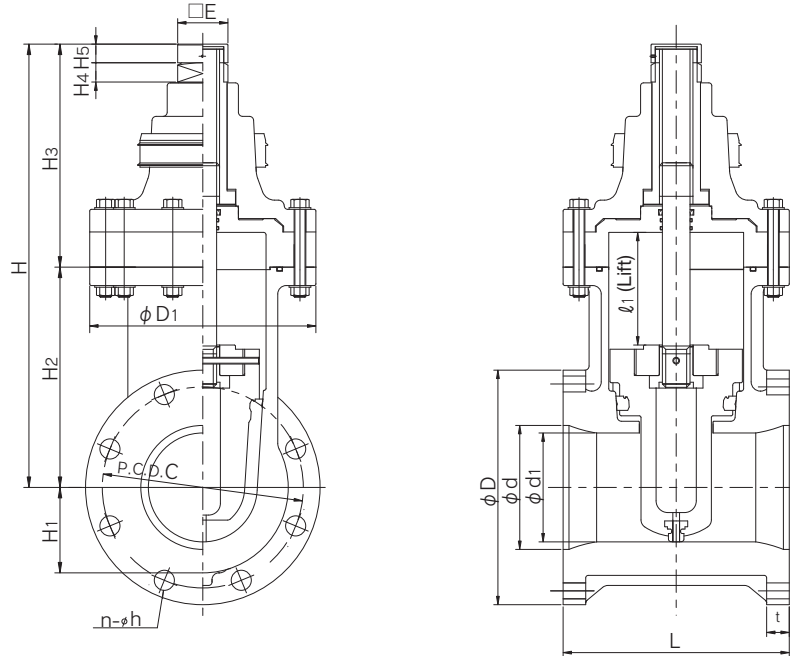
200 mm – 250 mm (8 inch – 10 inch)



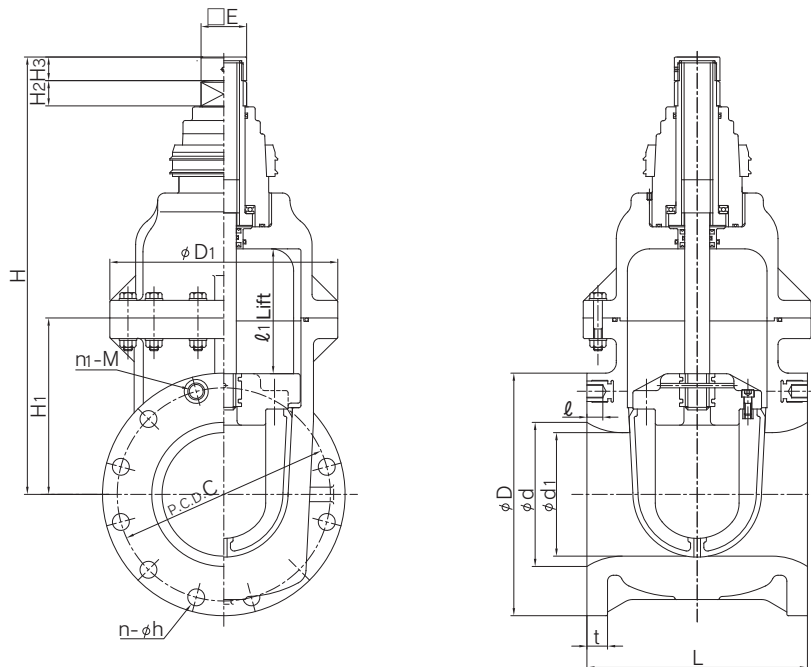
PART NO. / NAME	QTY	MATERIAL	PART NO. / NAME	QTY	MATERIAL	PART NO. / NAME	QTY	MATERIAL
1 BODY	1	HI-PVC	4 BONNET (LID) (A)	1	HI-PVC	18b DUST SEAL (B)	1	NBR
1a EMBEDDED BODY FITTING (5)	4	C3604	5 BONNET (LID) (B)	1	HI-PVC, U-PVC	32 PIN (A)	1	SUS304
2b SEAT	1	SBR	6 THRUST RING (4)	2	PP	33 SLEEVE	1	C3604
2c GATE (BODY) (A)	1	HI-PVC, C-PVC	6a THRUST BEARING (5)	1	SUJ2	34 NUT (3)	1	SUS403
2d GATE (BODY) EMBEDDED FITTING (A) (1)	1	SUS303	7 BOLT, NUT, WASHER	—	SUS304	40 ADAPTER	1	NBR
2e GATE (BODY) (B) (1)	1	HI-PVC	8 O-RING (B)	1	EPDM	64 CAP (D)	1	SUS304
2f GATE (BODY) EMBEDDED FITTING (B) (1)	4	SUS304	9 O-RING (C)	2-1	EPDM	65 SET SCREW (C)	1	SUS304
2g BOLT (A) (1)	4	SUS304	11 BUSH (B) (1)	1	PP	66 O-RING (NJ) (1)	1	EPDM
2h INTERNAL THREAD DEFLECTOR (2)	1	SUS304	16 O-RING (D) (1)	2	EPDM	67 O-RING (O) (1)	1	EPDM
2k DEFLECTOR RETAINER (2)	1	HI-PVC	17 SET SCREW (A) (1)	1	SUS304			
3 STEM	1	SUS304	18a DUST SEAL (A) (1)	1	EPDM			

NOTES (1) is used for sizes of 200 mm or more. (2) is used for sizes of 150 mm or less. (3) is used for sizes of 200 mm or less. (4) is used in a quantity of 1 piece for 200 and 250 mm. (5) is used only for 200 mm.

100 mm – 150 mm (4 inch – 6 inch)



200 mm – 250 mm (8 inch – 10 inch)



■ JIS (Unit: mm)

													JIS10K								
mm	d	d'	D ₁	ℓ ₁	E	H ₁	H ₂	H ₃	H ₄	H ₅	H	D	C	n	h	n ₁	M	ℓ	L	t	
100	100	—	195	102	60	89	207	223	23	26	430	210	175	8	19	—	—	—	230	27	
150	150	130	270	132	60	102	263	267	23	26	530	280	240	8	23	—	—	—	270	28	
200	196	168	310	175	60	240	39	27	—	—	607	330	290	10	23	2	M20	20	290	28	
250	247	210	360	219	60	270	44	27	—	—	743	400	355	12	25	—	—	—	380	30	

AIR RELEASE VALVE, ISOLATING VALVE APPLICABLE FOR SHALLOW LAYER BURIAL <MADE OF PDCPD>

- LIGHTWEIGHT AND COMPACT SYNTHETIC RESIN QUICK AIR RELEASE VALVE WITH ADEQUATE MEASURES TO DEAL WITH FOREIGN SUBSTANCE.
- EXCELLENT CUTOFF PERFORMANCE AT LOW PRESSURE (4.9 kPa)
- DISCHARGES AIR AT A HIGH RATE AND REDUCES THE TIME FOR WATER FILLING/RELEASE.
- THE ISOLATING VALVE IS EQUIPPED WITH A PRESSURE GAUGE MOUNTING TAP AS STANDARD (75 - 200 mm).

MANUAL



AIR RELEASE VALVE, ISOLATING VALVE FOR AGRICULTURE

BASIC SPECIFICATIONS

VALVE TYPE	AIR RELEASE VALVE, ISOLATING VALVE APPLICABLE FOR SHALLOW LAYER BURIAL <MADE OF PDCPD>
SIZE	25 mm, 75 mm—200 mm (1 inch, 3 inch—8 inch)
BODY MATERIAL	PDCPD
SEAL MATERIAL	EPDM SBR
CONNECTION / FLANGED	JIS7.5K, JIS10K, JIS16K
	THREADED—R

NOTES The maximum working pressure is the value including the water hammer pressure. The 25 mm type is equipped with a cock (body material: brass). The 75 mm to 200 mm isolating valves are butterfly valves.

SPECIFICATIONS AND PRODUCT LINEUP

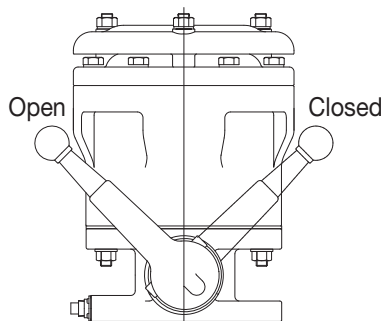
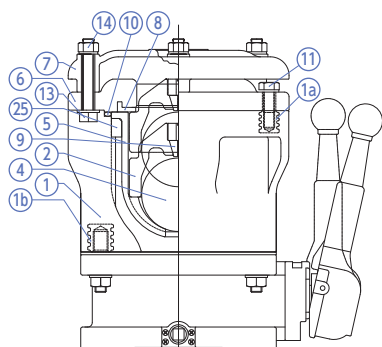
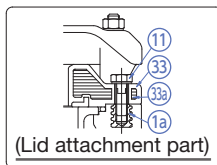
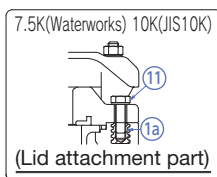
NOMINAL PRESSURE	WORKING PRESSURE (NORMAL TEMP.) MPa	Max. Working Pressure MPa	CONNECTION	SIZE				
				25	75	100	150	200
7.5k	0.75	1.3	THREADED (TYPE A)	○	—	—	—	—
			FLANGED (TYPE B)	—	—	—	—	—
10k	1.0	1.4	THREADED (TYPE A)	○	—	—	—	—
			FLANGED (TYPE B)	○	○	○	○	○
16k	1.6	2.2	THREADED (TYPE A)	○	—	—	—	—
			FLANGED (TYPE B)	○	○	○	—	—



AIR RELEASE VALVE AND ISOLATING VALVE FOR WATERWORKS

PRODUCT MODEL CODE LIST	ACTUATION	TYPE	OPERATING SYSTEM	BODY MATERIAL	SEAL MATERIAL	CONNECTION	SIZE
	V	**	**	*	*	**	***
	V	RW	LV	D	S	NR	025 25mm
		IW	ZZ	I	E	F1	10k
		AR				FW	7.5k
		IS				F6	16k
							200 200mm

PARTS LIST MANUAL

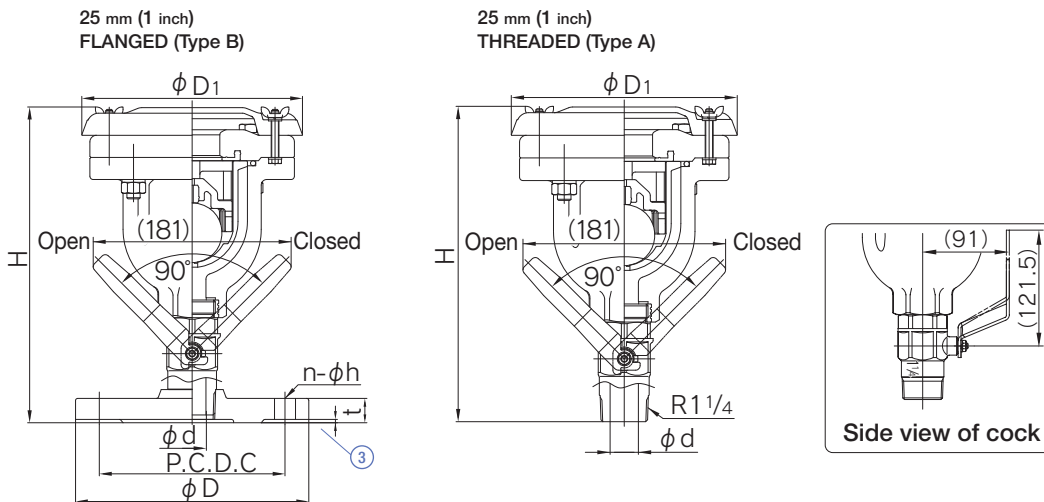


PART NO. / NAME	QTY	MATERIAL
① BODY	1	PDCPD
⑬ EMBEDDED FITTING (A)	—	C3604
⑭ EMBEDDED FITTING (B)	—	C3604
② MOVING VALVE BODY	1	PP
④ FLOAT VALVE BODY	1	PP
⑤ GUIDE	1	25mm~150mm—HI-PVC, 200mm—PDCPD
⑥ LID	1	PDCPD

PART NO. / NAME	QTY	MATERIAL
⑦ COVER	1	PDCPD
⑧ LARGE AIR HOLE VALVE SEAT	1	EPDM (SBR FOR WATERWORKS)
⑨ SMALL AIR HOLE VALVE SEAT	1	EPDM (SBR FOR WATERWORKS)
⑩ O-RING	1	EPDM (SBR FOR WATERWORKS)
⑪ BOLT, WASHER (A)	—	SUS304
⑬ BOLT, WASHER (B)	—	SUS304
⑭ NUT (B)	—	SUS304
⑫ EYE NUT	2	SUS304
⑬ INSERT	1	S45C

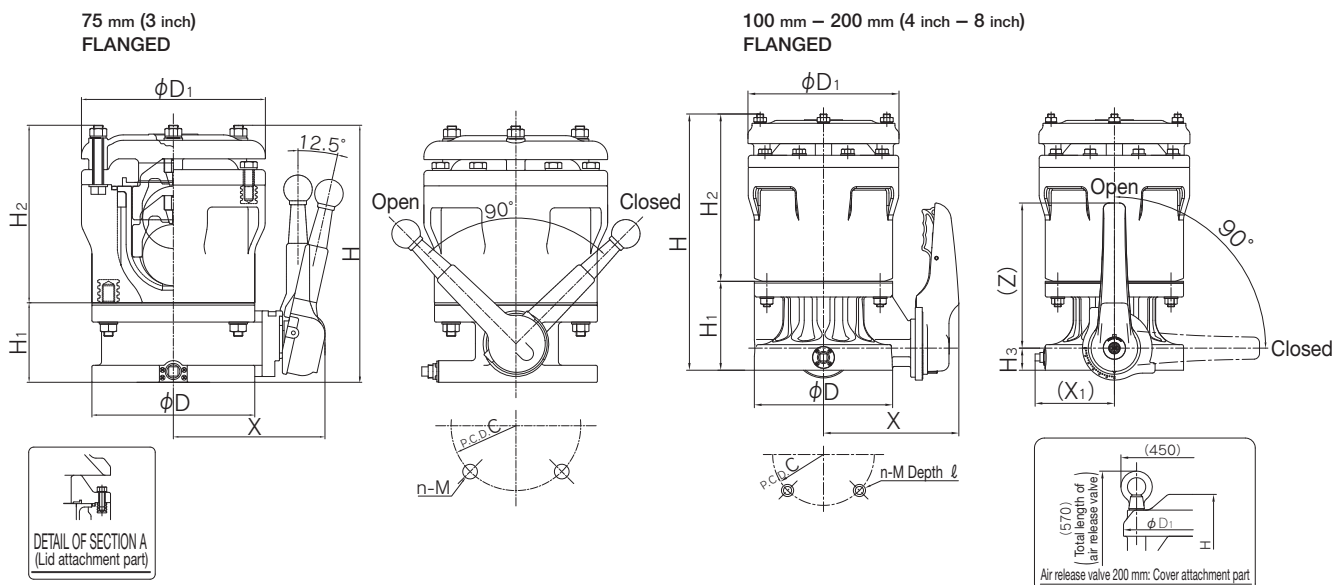
AIR RELEASE VALVE, ISOLATING VALVE

APPLICABLE FOR SHALLOW LAYER BURIAL <MADE OF PDCPD>
 CONNECTION / FLANGED—JIS THREADED—R



■ 25 mm flanged (Type B) JIS (Unit: mm)					7.5k (Waterworks)				10K (JIS10K), 16K (JIS16K)			
mm	NOMINAL PRESSURE	D ₁	H	d	D	C	n-h	t	D	C	n-h	t
25	7.5k 10k 16k	200	286	25	-	-	-	-	185	150	8-φ19	22

■ 25 mm threaded (Type A) JIS (Unit: mm)				
mm	NOMINAL PRESSURE	D ₁	H	d
25	7.5k 10k 16k	200	279	25



■ 75mm—200mm JIS (Unit: mm)																
mm	NOMINAL PRESSURE	D ₁	7.5k (Waterworks)			10K (JIS10K), 16K (JIS16K)			D ₁	H	H ₁	H ₂	H ₃	X	Z	
			C	n-M	ℓ	C	n-M	ℓ								
75		211	-	-	-	150	8-φ19	-	238	333	103	230	50	197	219	
100	7.5k 10k 16k	238	-	-	-	175	8-M16	22	260	411	123	288	38	233	250	
150		290	-	-	-	240	8-M20	30	341	596	203	393	70	282	320	
200		342	-	-	-	290	12-M20	30	440	729	203	526	70	322	400	

AUTOMATIC WATER FEEDING VALVE

- SIGNIFICANTLY SAVES WATER AND ENERGY BY SUPPLYING ONLY NECESSARY AMOUNT OF WATER ACCORDING TO THE SET WATER LEVEL.
- CAN ALSO BE USED FOR OTHER APPLICATIONS BY MANUAL OPERATION, BY CONNECTING A HOSE TO THE DISCHARGE PORT.
- FACILITATES INTERMITTENT IRRIGATION AND PREVENTS COLD-WEATHER DAMAGE.
- DOES NOT REQUIRE ELECTRICITY OR OTHER ENERGY SINCE IT DIRECTLY USES WATER PRESSURE IN THE PIPE LINE.
- PREVENTS FERTILIZER OR CHEMICAL AGENTS FROM FLOWING OUT DUE TO GRAVITY FED IRRIGATION AND PREVENTS WATER QUALITY DEGRADATION.

BASIC SPECIFICATIONS

VALVE TYPE ————— AUTOMATIC WATER FEEDING VALVE

SIZE ————— 50 mm–80 mm (2 inch–3 inch)

BODY MATERIAL ————— **HI-PVC**

SENSOR MATERIAL ————— **ABS**

CONNECTION / FLANGED — JIS10K

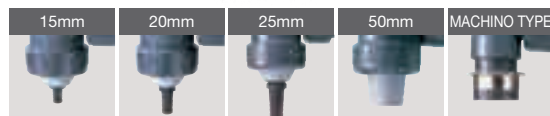
SOCKET — JIS

THREADED—Rc

	OPERATING DIFF. PRESSURE MPa(kg/cm ²)	MAXIMUM WORKING PRESSURE (NORMAL TEMPERATURE) MPa(kg/cm ²)	WATER LEVEL ADJUSTMENT
SIZE- 50 mm	0.02~0.75 {0.2~7.7}	1.0 {10.2}	-6cm }
SIZE- 80 mm	TYPE A: 0.015 - 0.5 {0.15 - 5.1} TYPE B: 0.03 - 0.75 {0.3 - 7.7}	TYPE A: 0.5 {5.1} TYPE B: 1.0 {10.2}	12cm



ATTACHMENT TYPES



80-mm attachment

15 mm, 20 mm, 25 mm,
50 mm, Machino type

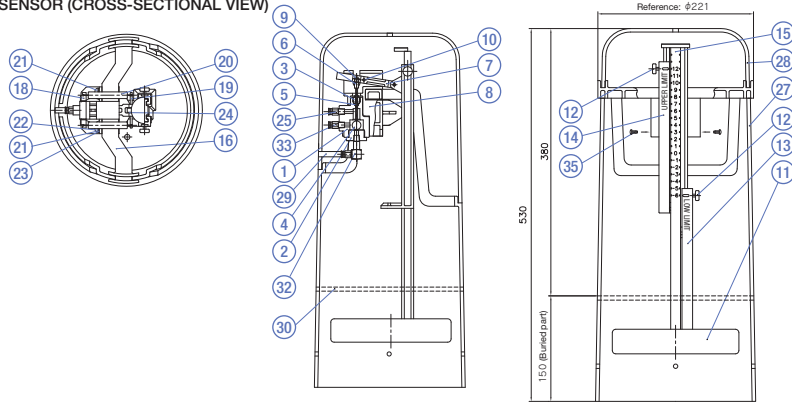
50-mm attachment

15 mm, 20 mm, 25 mm,
Machino type

PRODUCT MODEL CODE LIST	ACTUATION	TYPE	BODY MATERIAL	SEAL MATERIAL	CONNECTION	SIZE
	AAW	**	I	E	**	** *
	⋮	⋮	⋮	⋮	⋮	⋮
	AAW AUTOMATIC WATER FEEDING VALVE	ZZ AUTOMATIC WATER FEEDING VALVE(50mm) AT TYPE A(TYPE-A) BT TYPE B(TYPE-B)	I HI-PVC	E EPDM	F1 JIS10K NJ THREADED SJ SOCKET	050 50mm } 080 80mm

PRODUCT MODEL CODE LIST	TYPE	TYPE	MATERIAL	BODY SIZE	ATTACHMENT SIZE
	S	AW	AH	** *	** *
	⋮	⋮	⋮	⋮	⋮
	S PARTS SET	AW ATTACHMENT FOR ELBOW WITH SCREW EXTERNAL	AH ATTACHMENT (U-PVC)	050 50mm } 080 80mm	016 15mm } 050 50mm

■ SENSOR (CROSS-SECTIONAL VIEW)



PART NO. / NAME	QTY	MATERIAL	MEMO
① AUTOMATIC SWITCHING VALVE BODY	1	HI-PVC	
② AUTOMATIC SWITCHING VALVE LOWER CAP	1	HI-PVC	
③ AUTOMATIC SWITCHING VALVE UPPER CAP	1	HI-PVC	
④ AUTOMATIC SWITCHING VALVE BODY	1	EPDM+SUS304	
⑤ O-RING	1	EPDM	
⑥ COUPLING	1	SUS304	P3
⑦ SENSOR ARM	1	ABS	
⑧ SENSOR BODY	1	ABS	
⑨ PARALLEL PIN (A)	1	SUS304	PARALLEL PIN (A TYPE), φ2, L6
⑩ PARALLEL PIN (B)	1	SUS304	PARALLEL PIN (A TYPE), φ3, L28
⑪ FLOAT	1	PP FOAM	
⑫ WATER LEVEL ADJUSTING TAB	1	SUS304	DECORATIVE SCREW, M6, L10
⑬ LOW LIMIT STOPPER	1	ABS	
⑭ UPPER LIMIT STOPPER	1	ABS	
⑮ DIAL PLATE	1	ABS	
⑯ FIXING ARM	1	ABS	

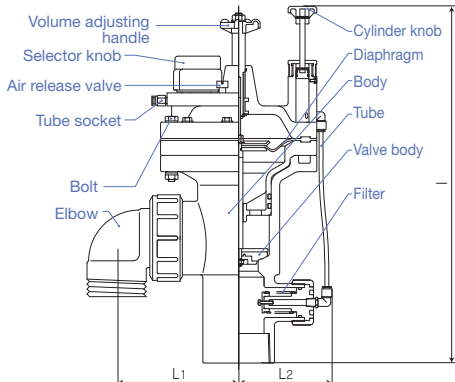
PART NO. / NAME	QTY	MATERIAL	MEMO
⑱ SPRING HOOK (A)	1	SUS304	
⑲ SPRING HOOK (B)	1	SUS304	
⑳ TENSION SPRING	2	SUS304	COIL SPRING BY SHOWA SPRING (SH08-15)
㉑ SCREW (B)	2	SUS304	CROSS RECESSED PAN HEAD SCREW, M5, L15
㉒ SPRING WASHER	2	SUS304	M5
㉓ WASHER (A)	2	SUS304	M5
㉔ WASHER (B)	2	SUS304	
㉕ QUICK-RELEASE JOINT, HALF UNION (A)	2	C3604	Plated
㉖ SENSOR CASE BODY	1	ABS	
㉗ SENSOR CASE LID	1	ABS	
㉘ TUBE	1	Nylon 11	
㉙ TAPE	1	U-PVC	By SUMITOMO 3M
㉚ QUICK ELBOW JOINT	1	C3604	Plated
㉛ QUICK-RELEASE JOINT, HALF UNION (B)	1	C3604	Not plated
㉜ TAPPING SCREW (A)	2	SUS304	CROSS RECESSED PAN HEAD TAPPING SCREW, M5, L15

NOTES (1) is used for the semiautomatic type.

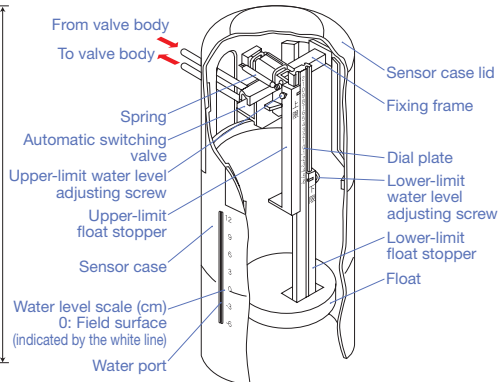
AUTOMATIC WATER FEEDING VALVE

CONNECTION / FLANGED—JIS SOCKET—JIS THREADED—Rc

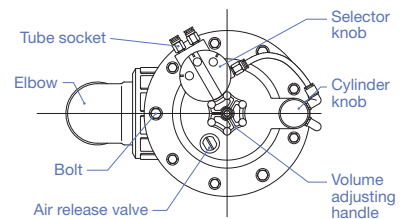
■ WATER PLUG BODY (CROSS-SECTIONAL VIEW)



■ SENSOR



■ WATER PLUG BODY (PLAN VIEW)



■ JIS (Unit: mm)

VALVE CONNECTION	mm	L ₁	L ₁	ℓ
SOCKET, THREADED	50	143	117	470
SOCKET, THREADED	80	187.5	137	548
FLANGED, 10K	50	143	117	541
FLANGED, 10K	80	187.5	134	621
FLANGED	50	143	117	541
FLANGED	80	187.5	134	622

ALFALFA VALVE® TYPE 82

- DESIGNED TO ACHIEVE EXCELLENT STRENGTH IN ADDITION TO ENSURING APPEARANCE AND SEALING PERFORMANCE.
- DESIGNED TO REDUCE SCATTERING OF WATER AND PREVENT HARMFUL EFFECTS ON SURROUNDING PADDY FIELDS.
- THE SMALL NUMBER OF PARTS FACILITATES DISASSEMBLY. THE COVER CAN BE REMOVED WITHOUT STOPPING THE PUMP.

BASIC SPECIFICATIONS

VALVE TYPE — ALFALFA VALVE® TYPE 82
 SIZE — 50 mm, 80 mm, 100 mm
 (2 inch, 3 inch, 4 inch)
 BODY MATERIAL — U-PVC
 SEAL MATERIAL — EPDM
 CONNECTION / FLANGED — JIS10K
 SOCKET — JIS

U-PVC	FLUID TEMPERATURE	MAXIMUM WORKING PRESSURE (NORMAL TEMPERATURE) MPa(kgf/cm²)	CONNECTION METHOD	
	0°C ~ 50°C	1.0 {10.2}	FLANGED	SOCKET

NOTES The maximum working pressure is the value including the water hammer pressure. Be careful that the maximum working pressure is not exceeded during use.
 * Concerning the allowable pressure for each temperature and material, see the technical documents at the end of this catalog.



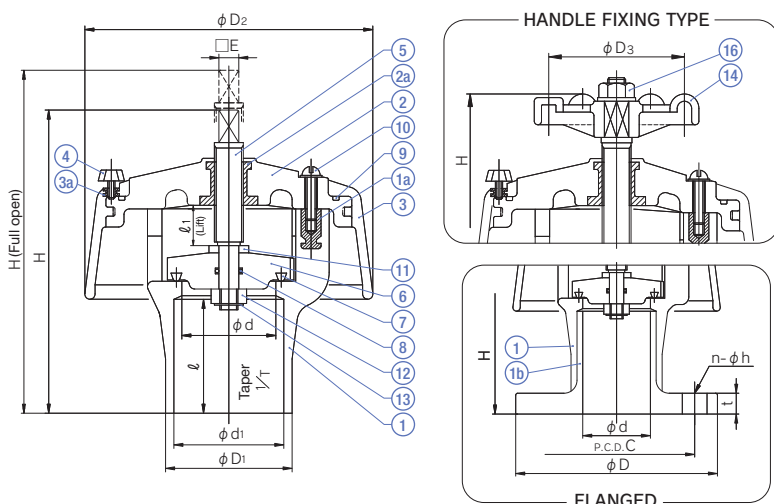
PRODUCT MODEL CODE LIST

ACTUATION	TYPE	OPERATING SYSTEM	BODY MATERIAL	SEAL MATERIAL	CONNECTION	SIZE
V	AF	**	U	E	**	** *
⋮	⋮	⋮	⋮	⋮	⋮	⋮
V MANUAL VALVE	AF ALFALFA VALVE	TH T-SHAPED HANDLE TYPE MH HANDLE FIXING TYPE	U U-PVC	E EPDM	SJ SOCKET F1 JIS10K	050 50mm ? 125 125mm

MANUAL

ALFALFA VALVE® TYPE 82

CONNECTION / FLANGED, SOCKET — JIS



PART NO. / NAME	QTY	MATERIAL	MEMO
1 BODY	1	U-PVC	
1a EMBEDDED BODY FITTING	4	C3604	
1b FLANGE	1	U-PVC	Used for flanged type.
2 BONNET	1	PP	
2a EMBEDDED BONNET FITTING	1	C3604	
3 COVER	1	PP	
3a EMBEDDED COVER FITTING	1	C3604	
4 BUTTERFLY BOLT	1	SUS304	
5 STEM	1	SUS303	
6 DISC	1	U-PVC	
7 PACKING (A)	1	NIPOL ⁽¹⁾	
8 O-RING	1	EPDM	
9 PACKING (B)	1	EPDM	
10 ROUND HEAD SCREW	4	SUS304	
11 WASHER (A)	1	SUS304	
12 NUT (A)	1	SUS304	
13 E-SHAPED STOP RING	1	SUS304	
14 HANDLE	1	PP	Used when the handle is provided.
16 HEX NUT (B)	1	U-PVC	Used when the handle is provided.

NOTES (1) NIPOL is a registered trademark of Zeon Corporation.

JIS (Unit: mm)		FLANGED				SOCKET				H				H (FULL OPEN)								
mm	d	JIS 10K				t	d ₁	1/T	ℓ	D ₁	D ₂	D ₃	E	ℓ ₁	SOCKET		FLANGED		SOCKET		FLANGED	
		D	C	n	h										T-SHAPED HANDLE TYPE	HANDLE FIXING TYPE	T-SHAPED HANDLE TYPE	HANDLE FIXING TYPE	T-SHAPED HANDLE TYPE	HANDLE FIXING TYPE	T-SHAPED HANDLE TYPE	HANDLE FIXING TYPE
50	52	155	120	4	19	16	60.80	1/37	63	70	160	75	11	25	162	163	178	179	187	188	203	204
80	78	185	150	8	19	18	89.80	1/43	72	101	190	110	11	35	196	209	214	227	231	244	249	262
100	100	210	175	8	19	18	115.00	1/44	92	129	220	110	11	45	246	261	264	279	291	306	309	324

ROTARY ANGLE VALVE

- MACHINO, SPECIAL ELBOW AND HOSE JOINT TYPE ARE AVAILABLE AS THE CONNECTION SOCKET, ALLOWING FOR INSTALLATION IN THE NARROW VALVE BOX.
- CAN BE USED FOR BOTH RICE AND VEGETABLE FIELDS BY CHANGING THE ATTACHMENT.

BASIC SPECIFICATIONS

VALVE TYPE ————— ROTARY ANGLE VALVE
 SIZE ————— 50 mm, 80 mm (2 inch, 3 inch)
 BODY MATERIAL ————— U-PVC
 SEAL MATERIAL ————— EPDM
 CONNECTION / FLANGED — JIS10K
 SOCKET — JIS
 THREADED — Rc

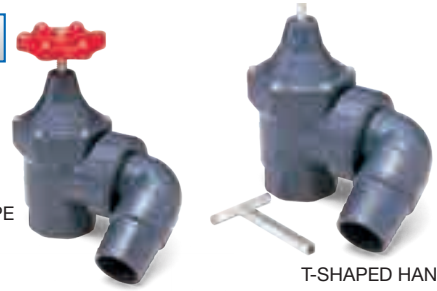
	FLUID TEMPERATURE	MAXIMUM WORKING PRESSURE (NORMAL TEMPERATURE) MPa(kgf/cm ²)	CONNECTION METHOD		
			FLANGED	SOCKET	THREADED
U-PVC	0°C ~ 50°C	1.0 (10.2)	○	○	○

NOTES The maximum working pressure is the value including the water hammer pressure. Be careful that the maximum working pressure is not exceeded during use.

* Concerning the allowable pressure for each temperature and material, see the technical documents at the end of this catalog.

MANUAL

HANDLE
FIXING TYPE



T-SHAPED HANDLE TYPE

* For the T-shaped handle type, the handle is sold separately.
 Handle (long): 470ℓ
 Handle (short): 150ℓ



MACHINO TYPE



EXTERNAL THREAD ELBOW

ATTACHMENT FOR EXTERNAL THREAD ELBOW



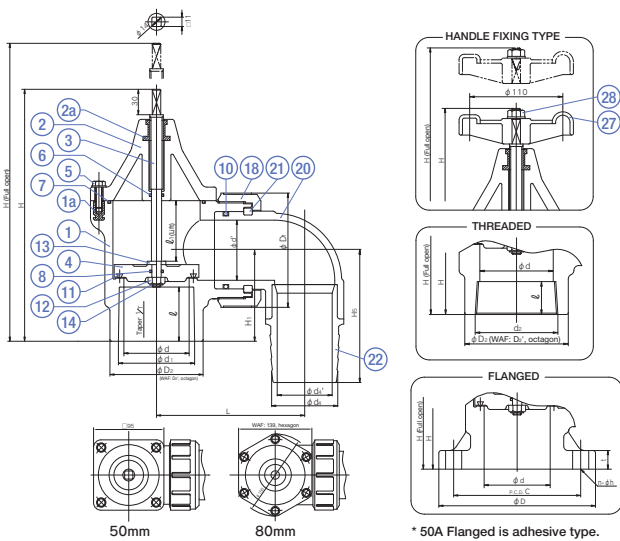
PRODUCT MODEL
CODE LIST

ACTUATION	TYPE	OPERATING SYSTEM	BODY MATERIAL	SEAL MATERIAL	CONNECTION	SIZE	ATTACHMENT
V	AG	**	U	E	**	** *	*
⋮	⋮	⋮	⋮	⋮	⋮	⋮	⋮
V MANUAL VALVE	AG ANGLE VALVE	TH T-SHAPED HANDLE TYPE MH HANDLE FIXING TYPE	U U-PVC	E EPDM	SJ SOCKET NJ THREADED F1 JIS10K	050 50mm ? 125 125mm	011 ELBOW HOSE 012 ELBOW MACHINO 05Y EXTERNAL THREAD ELBOW

MANUAL

ROTARY ANGLE VALVE

CONNECTION / FLANGED, SOCKET — JIS THREADED — Rc



PART NO. / NAME	QTY	MATERIAL	PART NO. / NAME	QTY	MATERIAL
① BODY	1	U-PVC	⑪ PACKING	1	NIPOL ⁽¹⁾
⑱ EMBEDDED BODY FITTING	4(50mm) 6(80mm)	C3604	⑫ NUT (A)	1	SUS304
② BONNET	1	U-PVC	⑬ WASHER	1	SUS304
⑳ EMBEDDED BONNET FITTING	1	C3604	⑭ E-SHAPED STOP RING	1	SUS304
③ STEM	1	SUS304	⑮ UNION NUT	1	U-PVC
④ DISC	1	U-PVC	⑯ ELBOW (A)	1	U-PVC
⑤ BOLT	4(50mm) 6(80mm)	SUS304	⑰ STOP RING (B)	1	PVDF
⑥ O-RING (A)	1	EPDM	⑱ HOSE SOCKET	1	U-PVC
⑦ O-RING (B)	1	EPDM	⑳ HANDLE	1	PP
⑧ O-RING (C)	1	EPDM	(Used for the handle fixing type.)		
⑩ O-RING (E)	1	EPDM	㉑ NUT (B)	1	SUS304
			(Used for the handle fixing type.)		

NOTES (1) NIPOL is a registered trademark of Zeon Corporation.

■ JIS (Unit: mm)

mm	T-SHAPED HANDLE TYPE								HANDLE FIXING TYPE								FLANGED					SOCKET			THREADED								
	FLANGED				SOCKET				FLANGED				SOCKET				JIS 10K																
	H (FULL OPEN)		H (FULL OPEN)		H (FULL OPEN)		H (FULL OPEN)		H (FULL OPEN)		H (FULL OPEN)		H (FULL OPEN)		H (FULL OPEN)		t					d ₁ 1/T ℓ			d ₂ ℓ		d ₄ d ₄ '						
	H	H	H	H	H	H	H	H	H	H	H	H	H	H	H	H	D	C	n	h	d ₁	1/T	ℓ	d ₂	ℓ	d ₄	d ₄ '						
50	263	308	247	292	247	292	275	320	259	304	259	304	100	129	52	51	96	80	77.5	147	45	155	120	4	19	20	60.8	1/37	63	Rc2	28	52	40
80	307	379	297	369	297	369	319	391	309	381	309	381	118.5	154	78	70	133	110	105	172.5	72	185	150	8	19	22	89.6	1/49	64	Rc3	35	77	65

ANGLE BUTTERFLY VALVE 80 mm, 100 mm

- THE WATER FEED RATE IS APPROX. 1.5 TIMES THAT OF CONVENTIONAL ANGLE VALVE 80 mm.
(When 6 units of angle valve 80 mm is required for a rice field, 4 units of angle butterfly valve 100 mm can supply necessary water.)
* The water feed rate varies depending on the piping conditions.
- CAN BE CONNECTED TO 2 TYPES OF ATTACHMENT: NOZZLE (MACHINO) AND HOSE SOCKET.
(Can be used for irrigation in fields and cleaning of agricultural machines by connecting a hose.)



MANUAL

HOSE SOCKET

NOZZLE (MACHINO)

NOTES The product is packaged in a state in which the primary side flange and bolts and nuts are not assembled. The lever must be operated slowly. Rapid closure may cause water hammer.

BASIC SPECIFICATIONS

VALVE TYPE — ANGLE BUTTERFLY VALVE TYPE 80 mm, 100 mm
 SIZE — 80 mm, 100 mm (3 inch, 4 inch)
 BODY MATERIAL — **PDCPD U-PVC HI-PVC**
 SEAL MATERIAL — **EPDM**
 CONNECTION / FLANGED — **JIS10K**

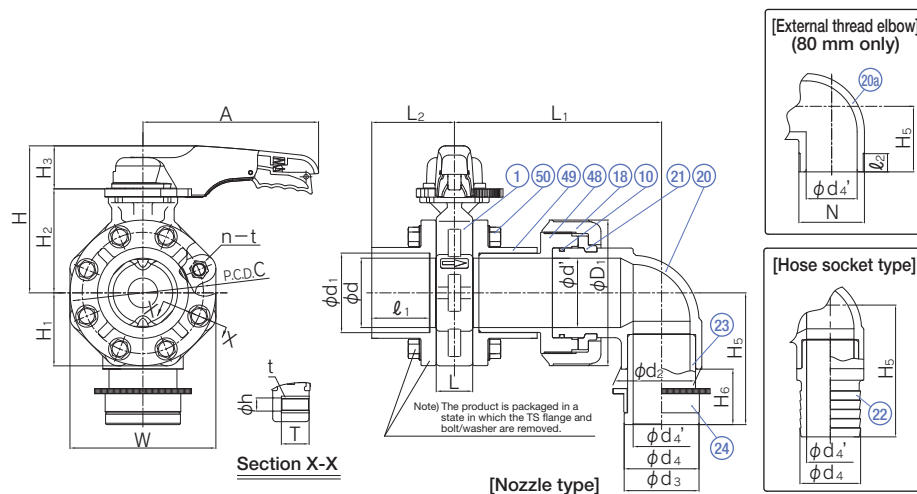
	FLUID TEMPERATURE	MAXIMUM WORKING PRESSURE (NORMAL TEMPERATURE) MPa(kgf/cm ²)
PDCPD U-PVC HI-PVC	0°C ~ 50°C	1.0 {10.2}

PRODUCT MODEL CODE LIST	ACTUATION	TYPE	OPERATING SYSTEM	BODY MATERIAL	SEAL MATERIAL	UPSTREAM CONNECTION	STANDARD	SIZE	DOWNSTREAM CONNECTION
	V	AB	LV	D	E	S	J	***	***
V	AB	LV	D	E	S	J	080 80mm ? 100 100mm	012 NOZZLE(MACHINO) 011 HOSE SOCKET 05Y EXTERNAL THREAD ELBOW	
	MANUAL VALVE	ANGLE BUTTERFLY VALVE	LEVER	PDCPD	EPDM	SOCKET	JIS		

MANUAL

ANGLE BUTTERFLY VALVE 80 mm, 100 mm

CONNECTION / FLANGED — JIS



PART NO. / NAME	QTY	MATERIAL
① LUG BUTTERFLY VALVE	1	PDCPD/PP/EPDM
⑩ O-RING (E)	1	EPDM
⑱ UNION NUT	1	U-PVC
⑳ ELBOW (A)	1	U-PVC
㉑ ELBOW (A)	1	HI-PVC
㉒ STOP RING (B)	1	PVDF
㉓ HOSE SOCKET	1	U-PVC
㉔ NOZZLE (A)	1	U-PVC
㉕ NOZZLE (B)	1	BC6
④⑧ SPECIAL FITTING	1	U-PVC
④⑨ TS FLANGE	2	HI-PVC
⑤⑩ BOLT, WASHER	16	SUS304

■ JIS (Unit: mm)

mm	H	H ₁	H ₂	H ₃	NOZZLE				HOSE SOCKET				EXTERNAL THREAD ELBOW				JIS10K															
					H ₅	H ₆	φ _{d3}	φ _{d4}	φ _{d4'}	H ₅	φ _{d4}	φ _{d4'}	h	H ₅	φ _{d4'}	ℓ ₂	N	φ _d	φ _{d'}	φ _{d1}	φ _{d2}	ℓ ₁	φ _{D1}	L ₁	L ₂	A	W	c	n	φ _h	T	t
80	191	94	135	56	154	74	105	81.5	62	154	77	65	19	90	70	25	TMS0 P=3	77	77	89.6	91	64	133	207	96	250	193	150	8	19	40	M16 WIDTH ACROSS FLATS 24
100	206	105	150	56	190	80	140	108	82	228	105	82	19	-	-	-	-	102	100	114.7	116	84	210	299	120	250	217	175	8	19	40	M16 WIDTH ACROSS FLATS 24